

PART NAME

NEMA 4X ENCLOSURE

PART No.

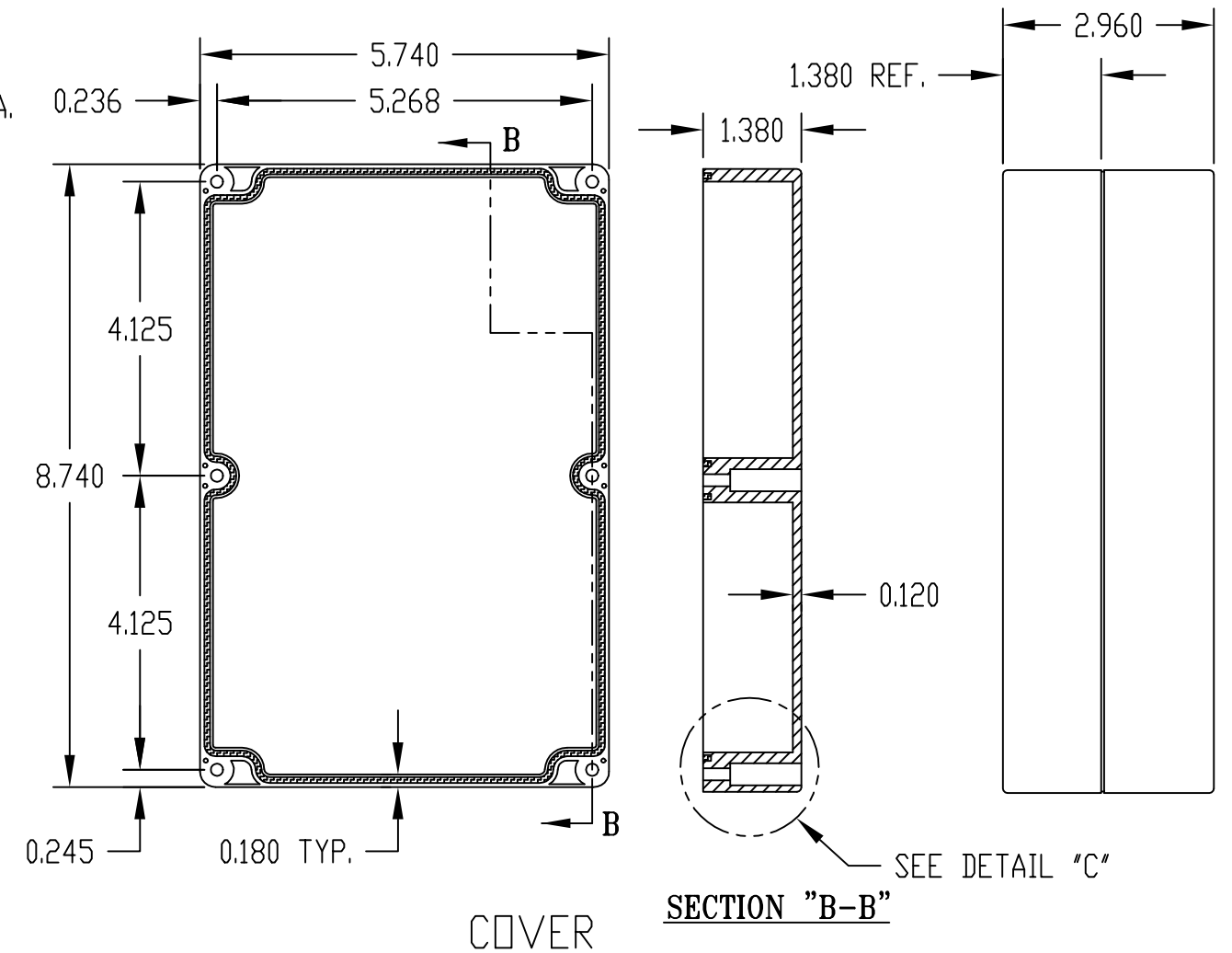
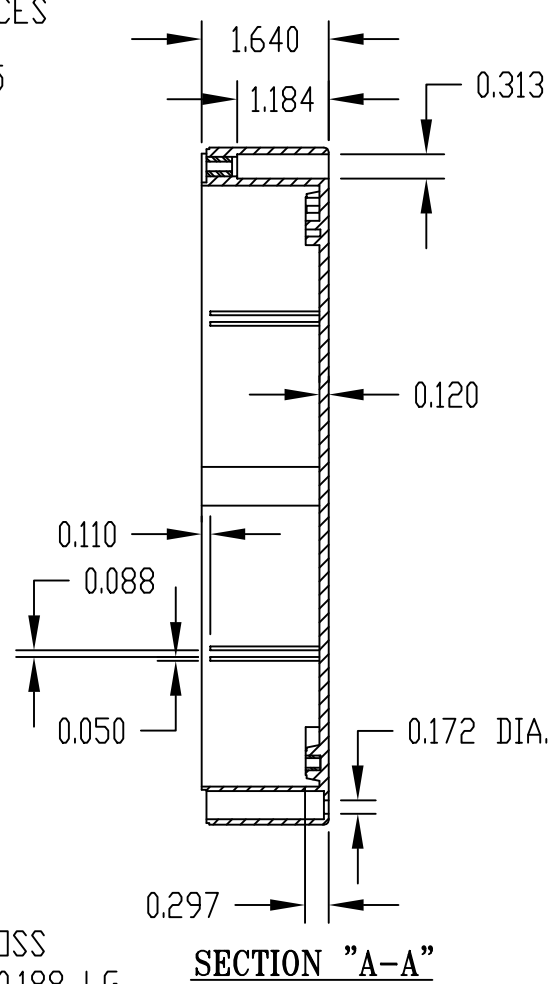
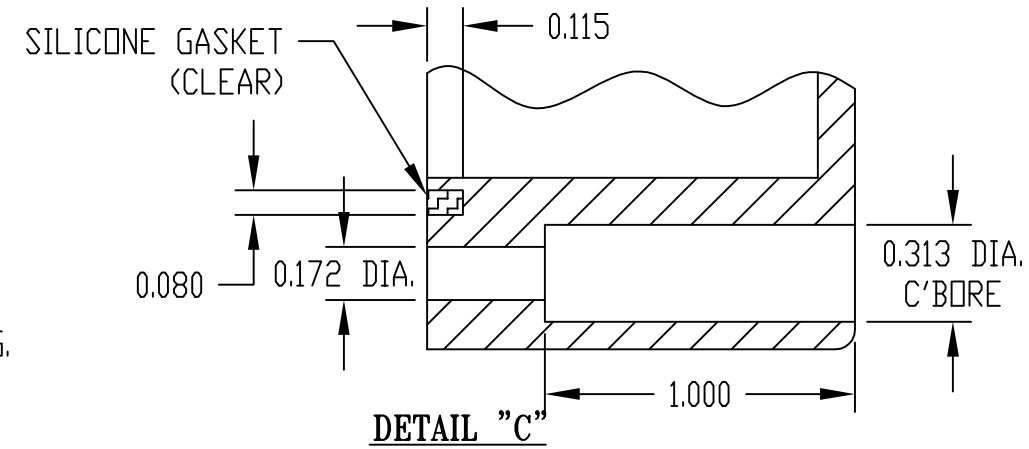
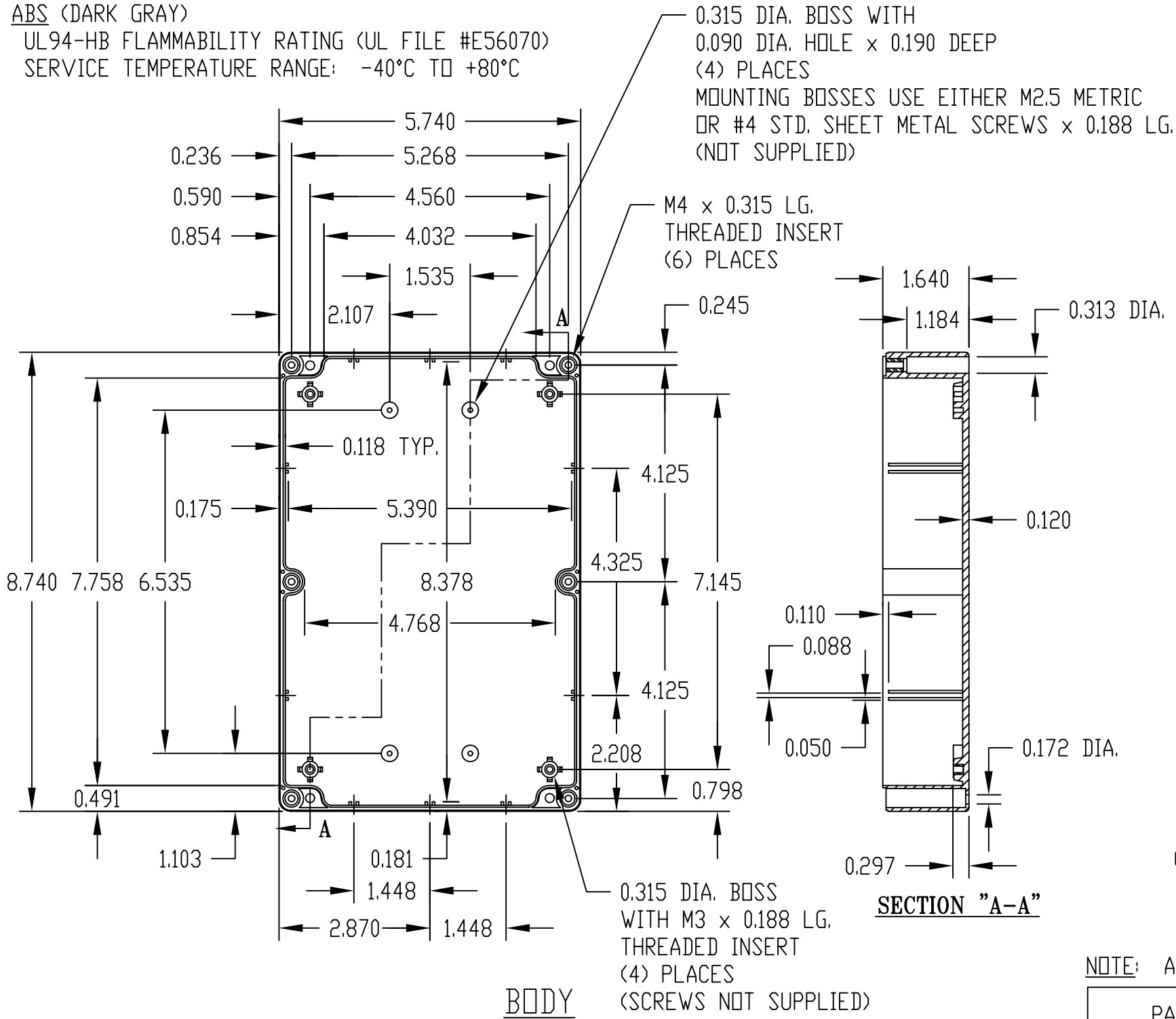
PN-1329, PN-1329-C AND PN-1329-DG

REV. DATE

11-17-08

INDUSTRY STANDARDS:

- POLYCARBONATE (LIGHT GRAY AND CLEAR)
- UL94-HB FLAMMABILITY RATING (UL FILE #E41613)
- UV STABILIZED
- SERVICE TEMPERATURE RANGE: -40°C TO +120°C
- ABS (DARK GRAY)
- UL94-HB FLAMMABILITY RATING (UL FILE #E56070)
- SERVICE TEMPERATURE RANGE: -40°C TO +80°C



NOTE: ALL DIMENSIONS HAVE ±0.015 TOLERANCE UNLESS OTHERWISE SPECIFIED.

| PART NUMBER | MATERIAL        |       | FINISH     |       | HARDWARE KIT  |
|-------------|-----------------|-------|------------|-------|---|
|             | BODY            | COVER | BODY       | COVER |   |
| PN-1329     | POLYCARBONATE   |       | LIGHT GRAY |       | KIT CONTAINS (6)<br>M4 x 20mm (0.787") LG.<br>SCREWS FOR ASSEMBLY |
| PN-1329-C   | POLYCARBONATE   |       | LIGHT GRAY | CLEAR |   |
| PN-1329-DG  | HIGH-IMPACT ABS |       | DARK GRAY  |       |   |