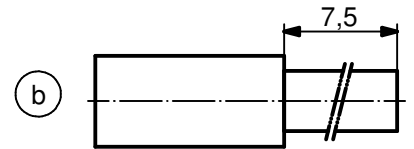


**NOTES:**

1. MATERIAL: COPPER ALLOY
2. PLATING:  
ITEM 1: 30µin HARD GOLD OVER min. 50µin NICKEL  
ITEM 2: GOLD FLASH over NICKEL  
ITEM 3: NICKEL PLATED
3. CRIMPING: USE CRIMP TOOL 360X10409X  
WITH TOOL INSERT 360X20029X  
SELECTOR SETTINGS: 3 FOR AWG 16  
2 FOR AWG 18  
2 FOR AWG 20



**STRIPPING DIMENSIONS**

Directive 2002/95/EC RoHS compliant

THIS DRAWING MAY NOT BE COPIED OR REPRODUCED IN ANY WAY, AND MAY NOT BE PASSED ON TO A THIRD PARTY WITHOUT WRITTEN PERMISSION. OWNERSHIP AND COPYRIGHT OF CONEC GmbH

DO NOT ALTER CAD DRAWING BY HAND

finish:				tolerance		scale:				
see notes				ISO 2768-m		5:1				
				dim. in mm		material:				
						see notes				
				date		title:				
				name		HIGH POWER CONTACT FEMALE				
				drawn 23.03.98		CRIMP VERSION 10A				
				appd. 23.03.98		D-SUB COMBINATION				
				norm		dwg no:				
				d-old		13K1IE7A				
3 x b	Ä3854	19.01.2011	K.H.	<b>CONEC</b> <sup>®</sup>				DIN-A4		
a	Origin							part no:	132C11019X	sh: 1
rev.	description	date	name							



material:		see notes	
title:			
HIGH POWER CONTACT FEMALE			
CRIMP VERSION 10A			
D-SUB COMBINATION			
dwg no:		13K1IE7A	
part no:		132C11019X	