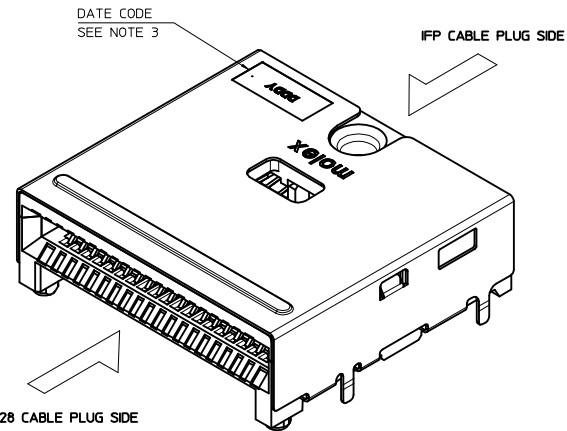
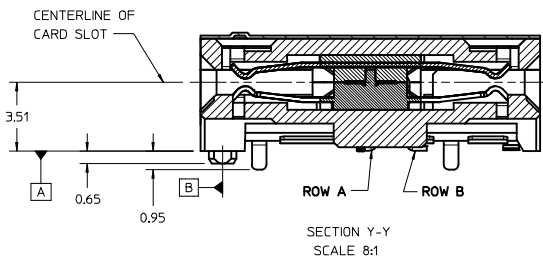
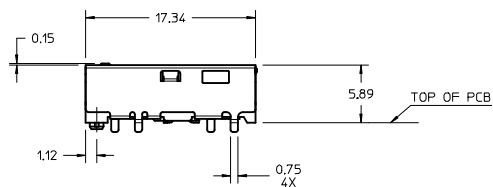


DETAIL 5
SCALE 10:1

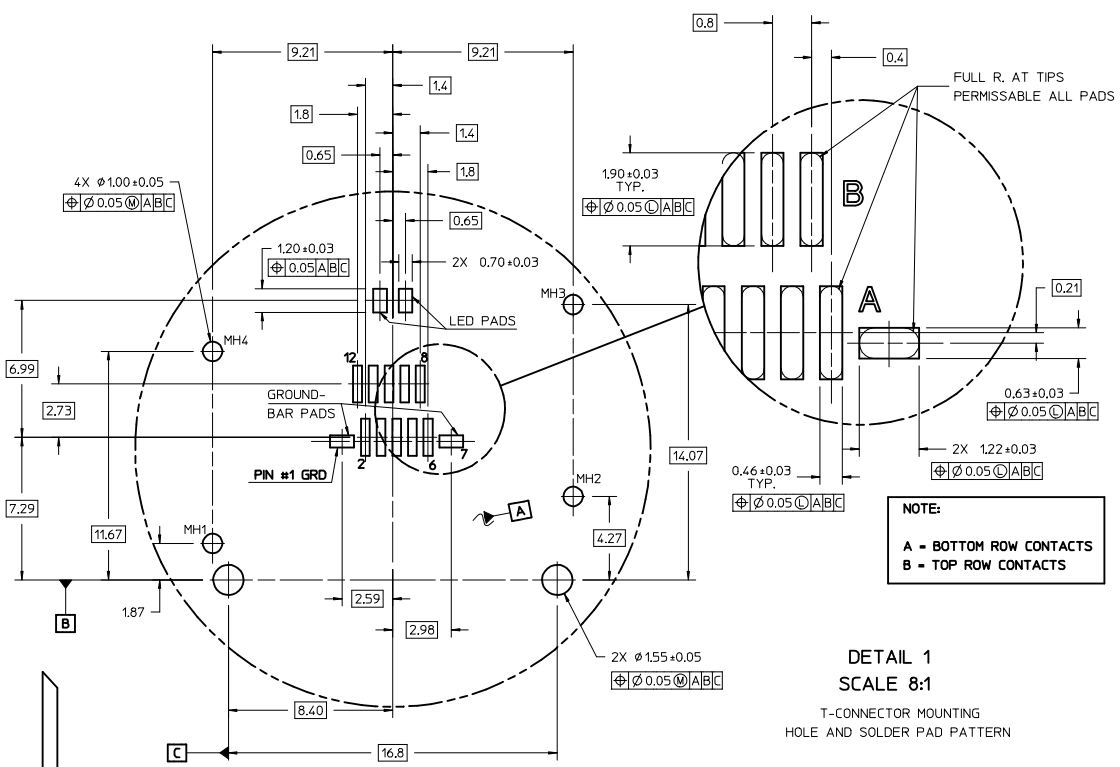
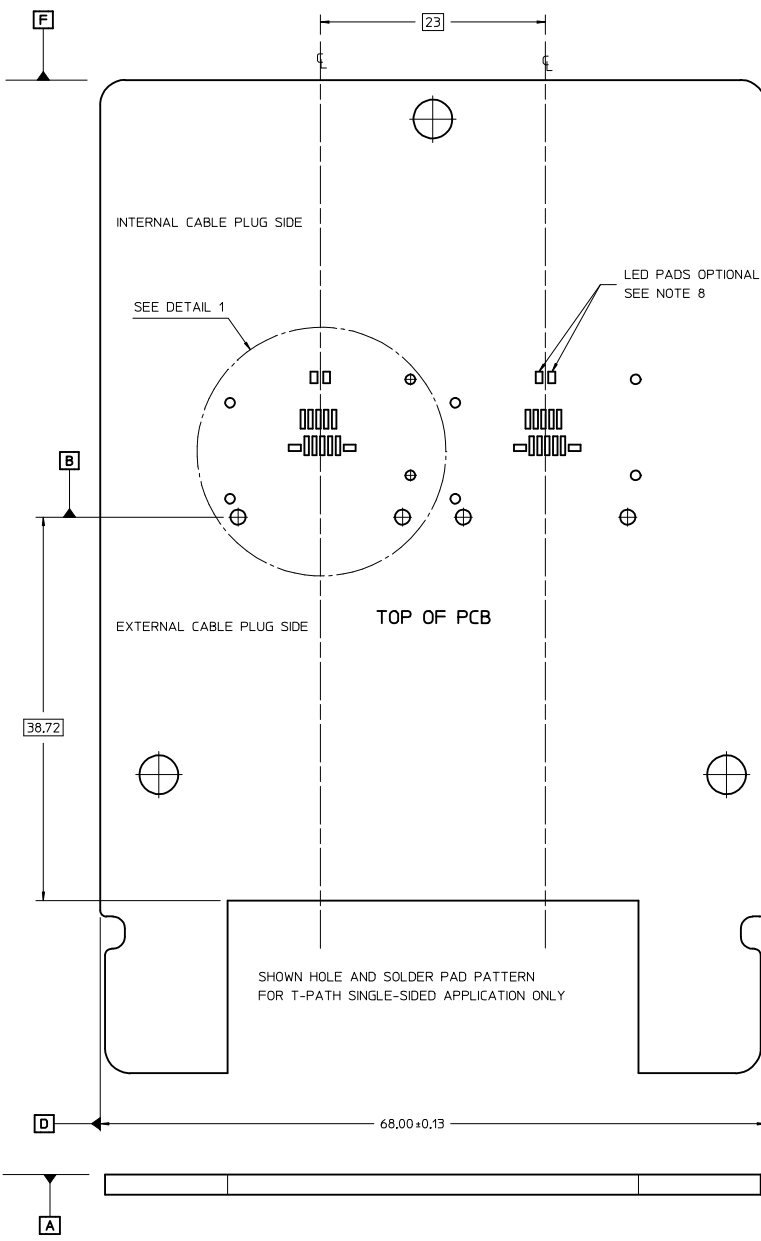


172604-0002
HARDTOP
T-PATH CONNECTOR
ASSEMBLY

NOTES:

- MATERIAL - HOUSING - HALOGEN FREE GLASS FILLED LCP
UL 94V-0, COLOR: BLACK
SHELLS: 0.15 THICK NICKEL-SILVER ALLOY, UNPLATED
TERMINALS - HIGH PERFORMANCE COPPER ALLOY
- PLATING - CONTACT AREA - 0.76 µm MIN GOLD OVER 2.54 µm NICKEL
SOLDER AREA - 2.54 - 5.09 µm TIN OVER 2.54 µm MIN NICKEL
- DATE CODE: 4 DIGIT (3 DIGIT DAY, 1 DIGIT YEAR)
- CONFORMS TO PRODUCT SPECIFICATION: PS-172604-001
- CONNECTOR ASSEMBLY IS ROHS AND LOW HALOGEN COMPLIANT
- DIMENSIONS AND TOLERANCES CONFORM TO AMSE Y14.5 2009
- LED IS OPTIONAL. RECOMMENDED LED PACKAGE: 1608/0603 0.4mm HIGH MAX.
- PACKAGING: TAPE AND REEL. SEE SHEET 6
- CONNECTOR TO BE USED IN CONJUNCTION WITH EMI CAGES SHOWN ON DRAWING SD-172604-2100
- IFF CABLE PLUG TO HAVE 1.0mm THICK PCB.

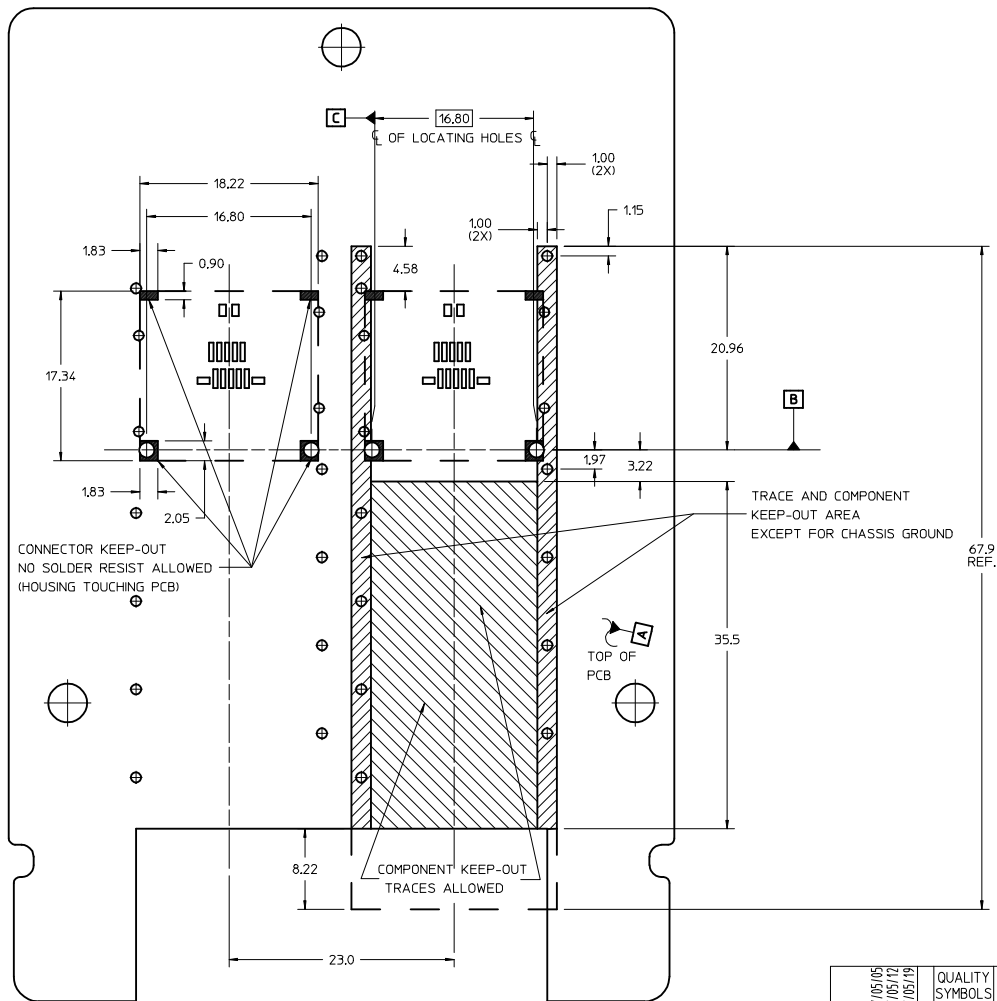
| | | | | | | | |
|--|-----------------|--|---------------------------------------|-------------------------|--------------------------------------|------------------------|---------------------|
| ADD 132 DIM EC NO. UCFP2017-2046 DRAWN BY: MWOLFE CHYKBARKER APPR: SMILLER 2017/05/05 2017/05/12 2017/05/19 | QUALITY SYMBOLS | GENERAL TOLERANCES (UNLESS SPECIFIED) | DIMENSION STYLE | SCALE | DESIGN UNITS | THIRD ANGLE PROJECTION | |
| | ▽=0 | mm INCH | MM ONLY | 4:1 | METRIC | ⊕ | |
| | ▽=1 | 4 PLACES ± --- ± --- 3 PLACES ± --- ± --- 2 PLACES ± 0.13 ± --- 1 PLACE ± 0.25 ± --- 0 PLACE ± --- ± --- | DRAWN BY DATE MWOLFE 2016/07/01 | DATE | T-PATH CONNECTOR HARDTOP ASSEMBLY | | |
| | ▽=0 | ANGULAR ±1/2° DRAFT WHERE APPLICABLE MUST REMAIN WITHIN DIMENSIONS | CHECKED BY DATE SMILLER 2017/05/19 | DATE | | | |
| REV | DESCRIPTION | MATERIAL NO. | DOCUMENT NO. | molex SD-172604-0002 | | | |
| A | SIZE D | 172604-0002 | SD-172604-0002 | | | | SHEET NO. 1 OF 4 |



PCB LAYOUT FOR T-PATH CONNECTOR MOUNTING

FRONT OF CONNECTOR
(PLUG MODULE SIDE)

| | | | | | | | |
|---|-----------------------|--|-----------------------------------|---|--------------|------------------------|--|
| SEE SHEET 1 IEC NO: UCP2017-2046 DRAWN BY: MWOLFE 2017/05/05 CHECKED BY: CHYD BARKER 2017/05/12 APPR: SMILLER 2017/05/19 | QUALITY SYMBOLS | GENERAL TOLERANCES (UNLESS SPECIFIED) | DIMENSION STYLE | SCALE | DESIGN UNITS | THIRD ANGLE PROJECTION | |
| | $\nabla=0$ | mm INCH | MM ONLY | 4:1 | METRIC | | |
| | $\nabla=0$ | 4 PLACES ± --- ± --- | DRAWN BY: MWOLFE DATE: 2016/07/01 | TITLE: T-PATH CONNECTOR HARDTOP ASSEMBLY molex MATERIAL NO: 472604-0002 DOCUMENT NO: SD-172604-0002 | | | |
| | $\nabla=0$ | 3 PLACES ± --- ± --- | CHECKED BY: DATE: | | | | |
| $\nabla=0$ | 2 PLACES ± 0.13 ± --- | APPROVED BY: SMILLER DATE: 2017/05/19 | SIZE | SHEET NO. 2 OF 4 | | | |
| | 1 PLACE ± 0.25 ± --- | DRAFT WHERE APPLICABLE MUST REMAIN WITHIN DIMENSIONS | D | THIS DRAWING CONTAINS INFORMATION THAT IS PROPRIETARY TO MOLEX INCORPORATED AND SHOULD NOT BE USED WITHOUT WRITTEN PERMISSION | | | |



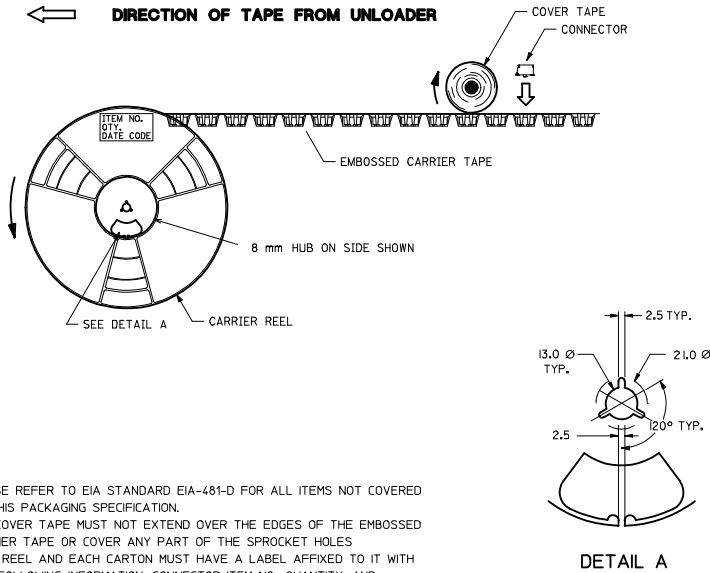
T-PATH CONNECTOR AND EMI CAGE
KEEP-OUT ZONES

| SEE SHEET 1 IEC NO: UCP2017-2046 DRAWN BY: MWOLFE 2017/05/05 CHECKED BY: CHYD BARKER 2017/05/12 APPR: SMILLER 2017/05/19 REV DESCRIPTION | QUALITY SYMBOLS $\nabla=0$ $\nabla=0$ $\nabla=0$ | | GENERAL TOLERANCES (UNLESS SPECIFIED) <table border="1"> <thead> <tr> <th></th> <th>mm</th> <th>INCH</th> </tr> </thead> <tbody> <tr> <td>4 PLACES</td> <td>±---</td> <td>±---</td> </tr> <tr> <td>3 PLACES</td> <td>±---</td> <td>±---</td> </tr> <tr> <td>2 PLACES</td> <td>±0.13</td> <td>±---</td> </tr> <tr> <td>1 PLACE</td> <td>±0.25</td> <td>±---</td> </tr> <tr> <td>0 PLACE</td> <td>±---</td> <td>±---</td> </tr> </tbody> </table> | | | mm | INCH | 4 PLACES | ±--- | ±--- | 3 PLACES | ±--- | ±--- | 2 PLACES | ±0.13 | ±--- | 1 PLACE | ±0.25 | ±--- | 0 PLACE | ±--- | ±--- | DIMENSION STYLE MM ONLY | | SCALE 4:1 | | DESIGN UNITS METRIC | | THIRD ANGLE PROJECTION | |
|--|---|------|--|--|--------------------|----|--------------------|----------|---|------|----------|------|------|----------|-------|------|---------|-------|------|---------|------|------|-----------------------------------|--|---------------------|--|-------------------------------|--|------------------------|--|
| | | mm | INCH | | | | | | | | | | | | | | | | | | | | | | | | | | | |
| | 4 PLACES | ±--- | ±--- | | | | | | | | | | | | | | | | | | | | | | | | | | | |
| | 3 PLACES | ±--- | ±--- | | | | | | | | | | | | | | | | | | | | | | | | | | | |
| 2 PLACES | ±0.13 | ±--- | | | | | | | | | | | | | | | | | | | | | | | | | | | | |
| 1 PLACE | ±0.25 | ±--- | | | | | | | | | | | | | | | | | | | | | | | | | | | | |
| 0 PLACE | ±--- | ±--- | | | | | | | | | | | | | | | | | | | | | | | | | | | | |
| DRAFT WHERE APPLICABLE MUST REMAIN WITHIN DIMENSIONS | | | MATERIAL NO. 172604-0002 | | DATE 2016/07/01 | | DATE 2017/05/19 | | TITLE T-PATH CONNECTOR HARDTOP ASSEMBLY | | | | | | | | | | | | | | | | | | | | | |
| ANGLAR ±1/2° | | | MATERIAL NO. 172604-0002 | | DATE 2017/05/19 | | DATE 2017/05/19 | | DOCUMENT NO. SD-172604-0002 | | | | | | | | | | | | | | | | | | | | | |
| SEE SHEET 1 | | | MATERIAL NO. 172604-0002 | | DATE 2017/05/19 | | DATE 2017/05/19 | | SHEET NO. 3 OF 4 | | | | | | | | | | | | | | | | | | | | | |

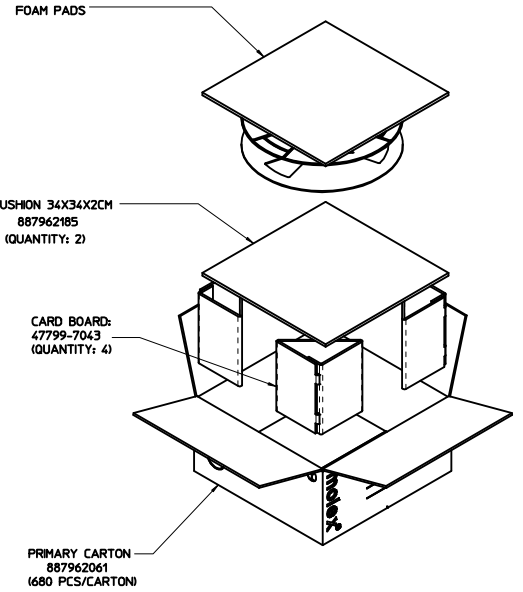
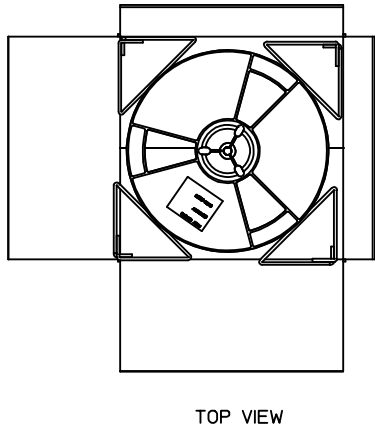
THIS DRAWING CONTAINS INFORMATION THAT IS PROPRIETARY TO MOLEX INCORPORATED AND SHOULD NOT BE USED WITHOUT WRITTEN PERMISSION

| CKT SIZE ** | PARTS PER REEL | REELS PER CARTON | PARTS PER CARTON | TRAILING EMPTY POCKETS ** | LEADING EMPTY POCKETS ** |
|-------------|----------------|------------------|------------------|---------------------------|--------------------------|
| 28 | 300 | 1 | 300 | 20 | 20 |

** SEE NOTE 11



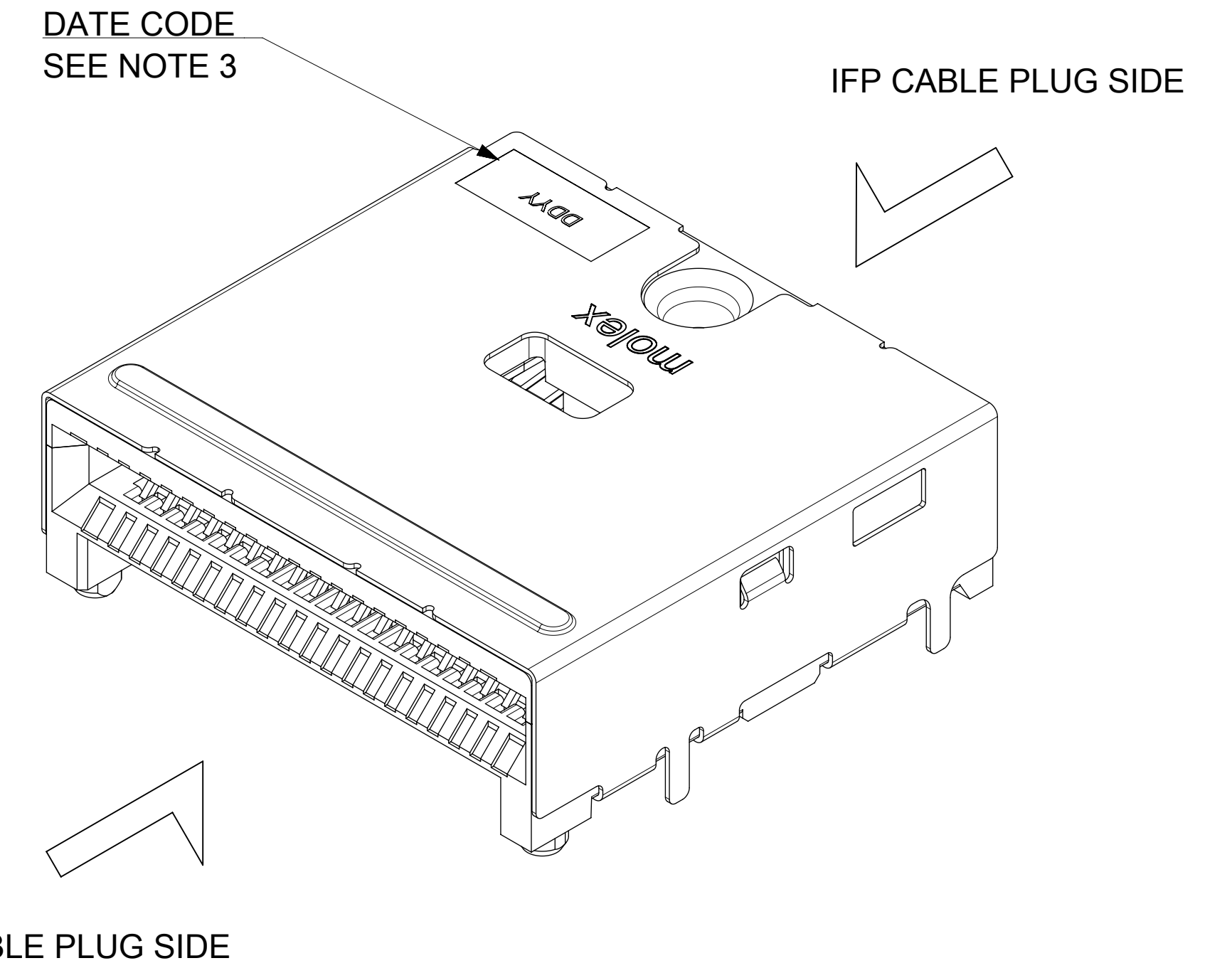
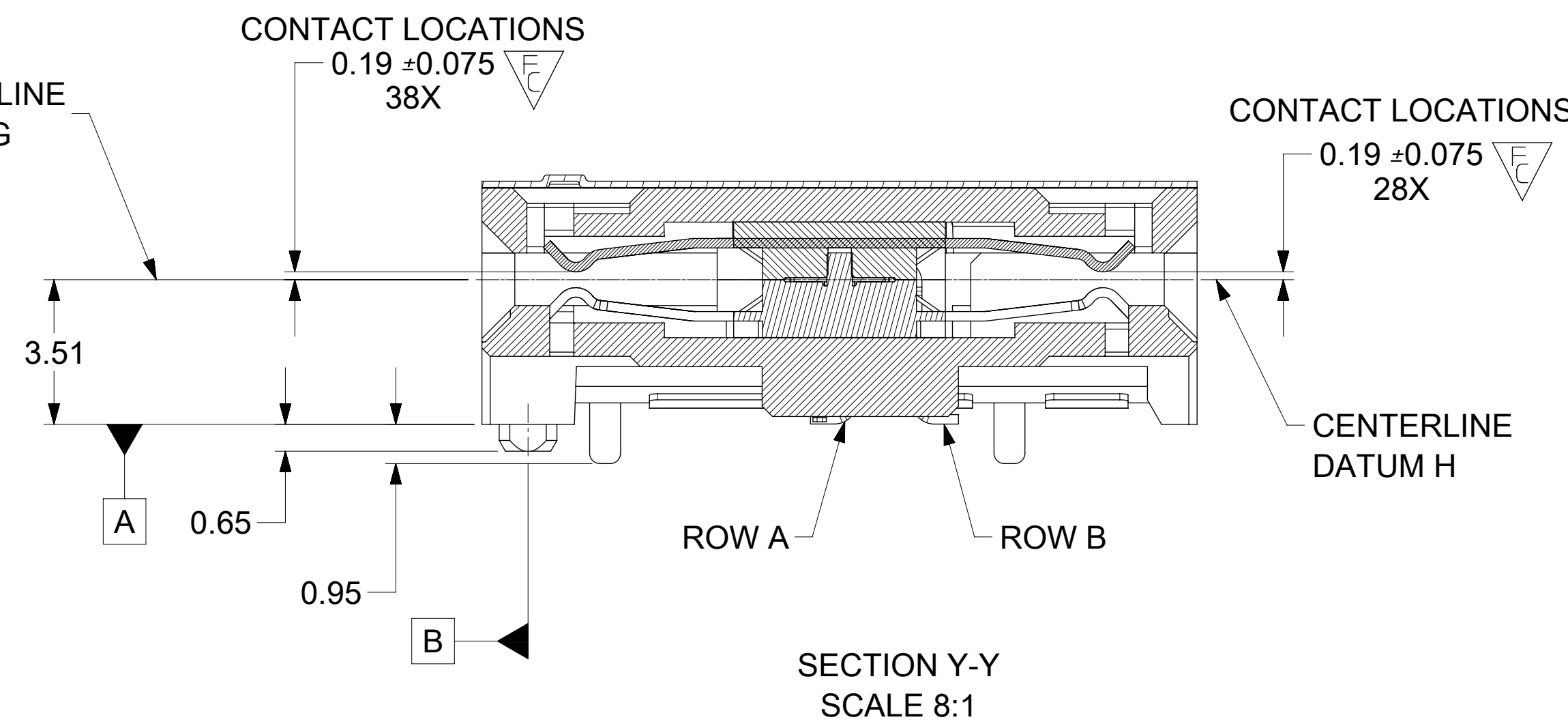
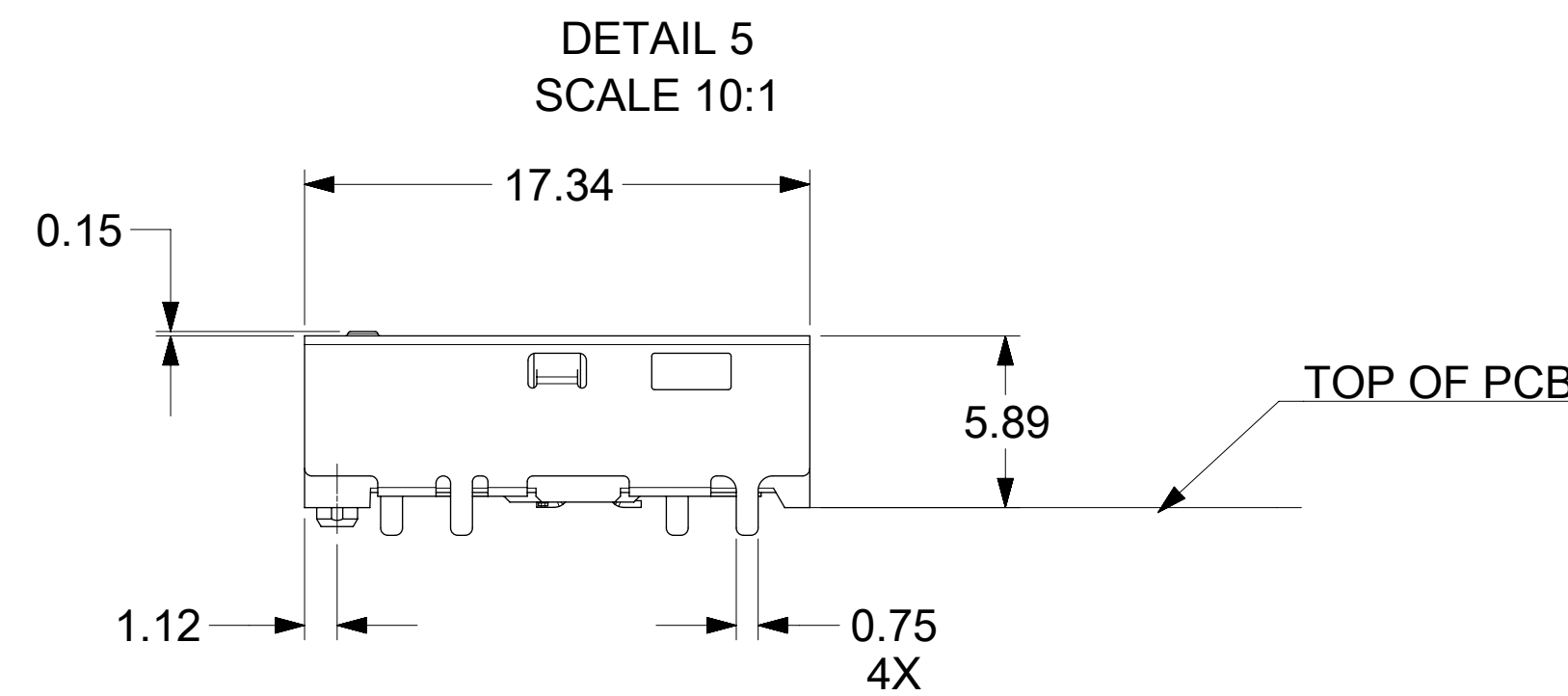
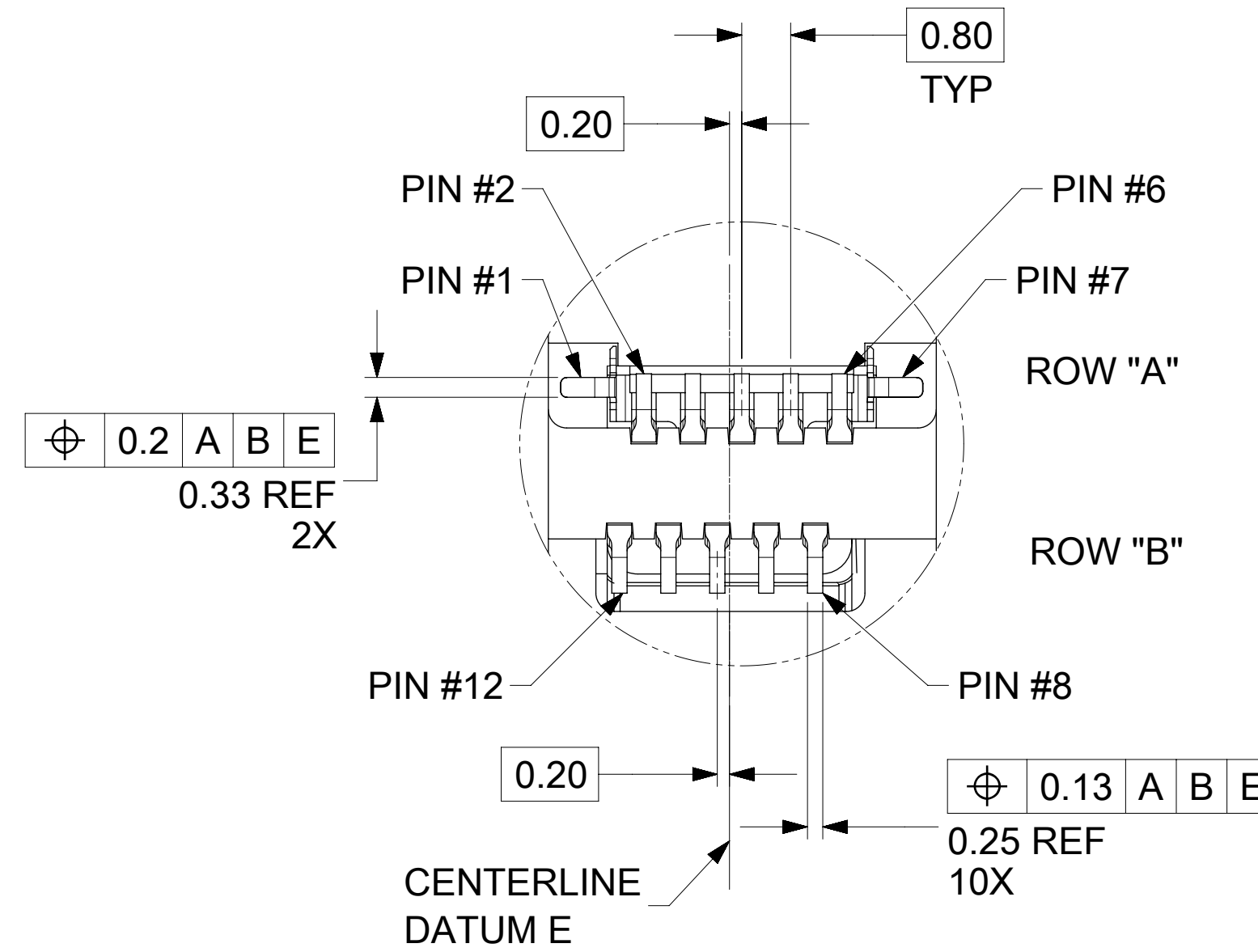
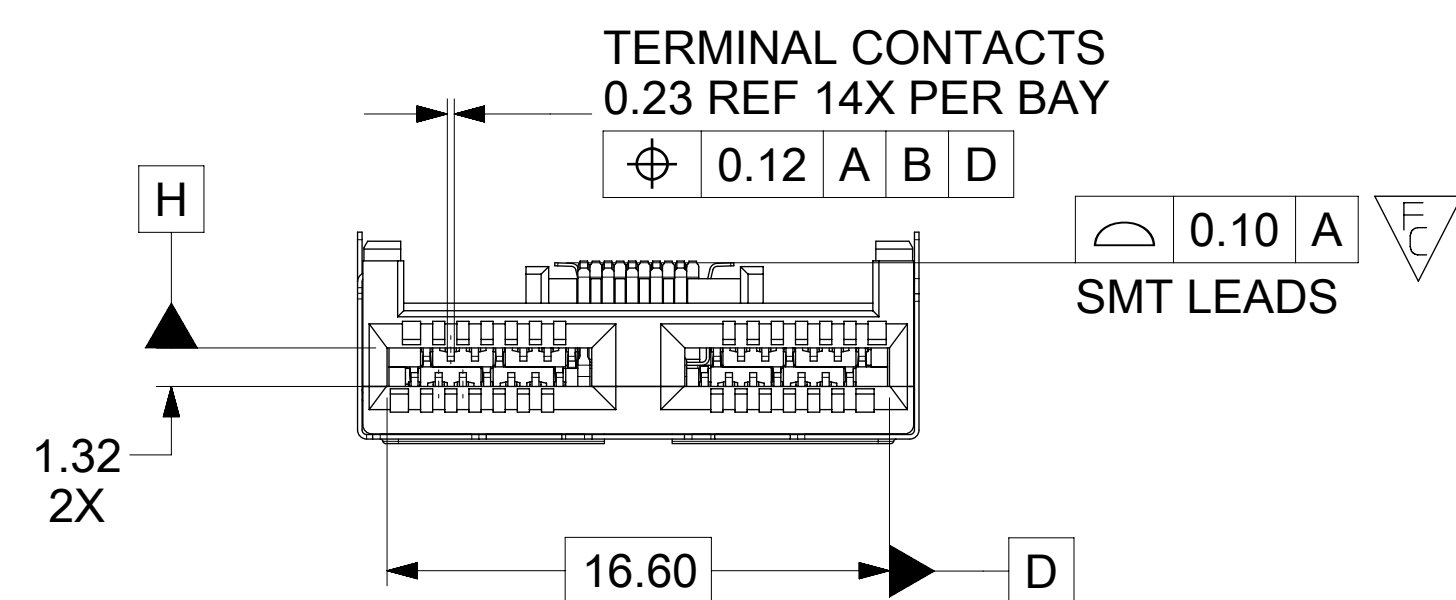
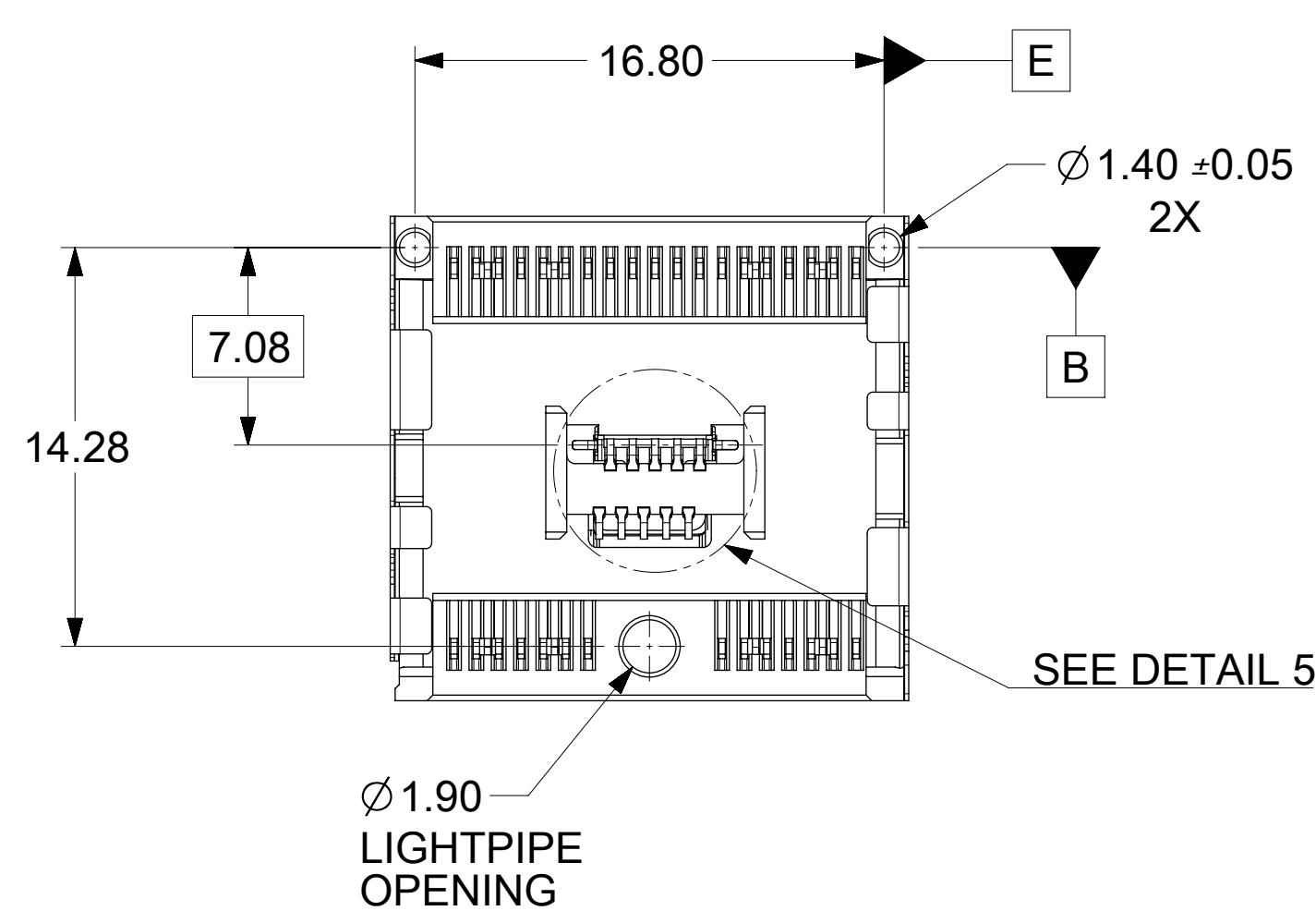
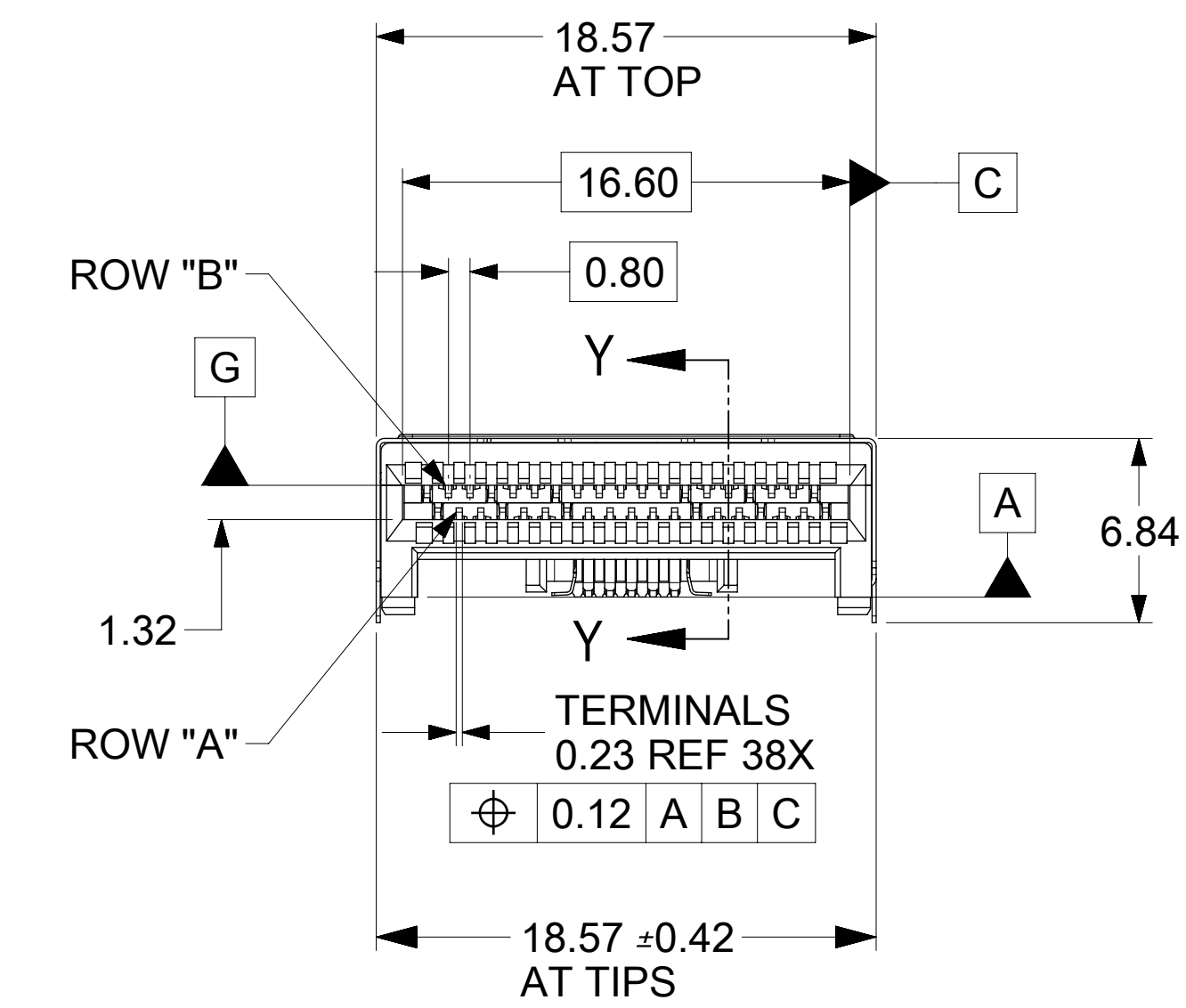
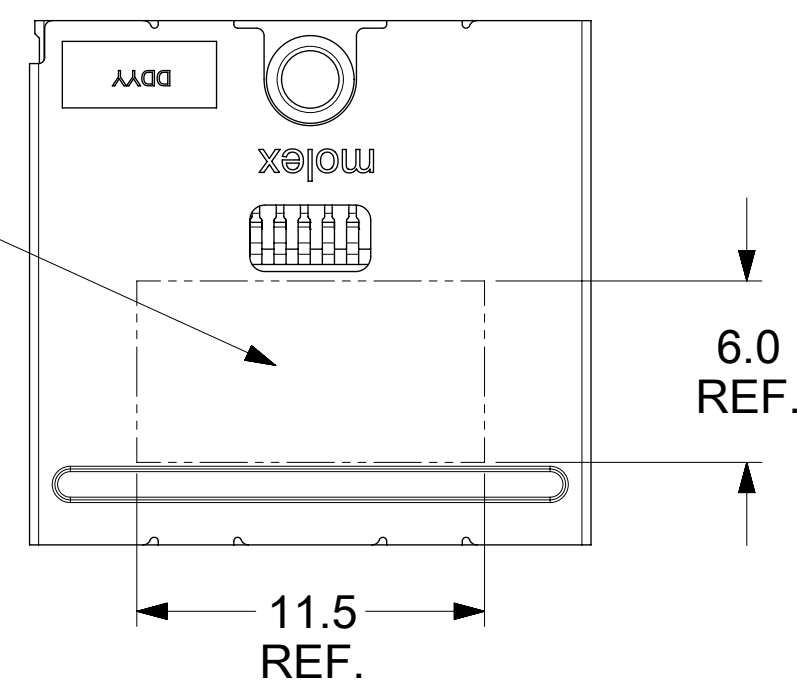
- NOTES:
- PLEASE REFER TO EIA STANDARD EIA-481-D FOR ALL ITEMS NOT COVERED BY THIS PACKAGING SPECIFICATION.
 - THE COVER TAPE MUST NOT EXTEND OVER THE EDGES OF THE EMBOSSED CARRIER TAPE OR COVER ANY PART OF THE SPROCKET HOLES
 - EACH REEL AND EACH CARTON MUST HAVE A LABEL AFFIXED TO IT WITH THE FOLLOWING INFORMATION: CONNECTOR ITEM NO., QUANTITY, AND DATE CODE.
 - ALL PACKAGING COMPONENT MATERIALS (COVER TAPE, EMBOSSED CARRIER TAPE, AND CARRIER REEL) ARE 100% ANTI-STATIC
 - ABSOLUTELY NO TAPE SPLICES ARE PERMITTED ON FINISHED REELS.
 - PACKAGING MATERIALS:
 COVER TAPE - COMPOSITE OF POLYETHYLENE TEREPHTHALATE (PET), POLYETHYLENE (PE), AND POLYFILM (PEF)
 EMBOSSED CARRIER TAPE - POLYSTYRENE (PS)
 CARRIER REEL - POLYSTYRENE (PS)
 - THE COVER TAPE MUST HAVE A PEEL STRENGTH BETWEEN 10 AND 60 GRAMS PER SIDE WHEN PULLED OPPOSITE THE DIRECTION OF THE CARRIER TAPE TRAVEL SUCH THAT THE COVER TAPE MAKES AN ANGLE OF 0°/15° AS SHOWN IN DETAIL B.
 - THERE ARE TO BE NO SKIPS IN THE COVER TAPE BOND.
 - REFER TO PACKAGING MATRIX FOR NUMBER OF CONNECTORS PER REEL.
 - MUST HAVE A MINIMUM OF 3/4 mm OF CARRIER TAPE TO COVER SLOTS IN HUB.
 - TRAILING EMPTY POCKETS TO BE LOCATED AT THE HUB OF THE CARRIER REEL AND LEADING EMPTY POCKETS TO BE AT THE OUTSIDE EDGE OF THE CARRIER REEL.
 - CARTON MUST BE PACKED TIGHT WITH AT LEAST FOUR 5 SHEETS OF PINK FOAM TO ELIMINATE ANY HEADROOM.
 - ELV AND ROHS COMPLIANT



T-PATH CONNECTOR TAPE AND REEL PACKAGING INFORMATION

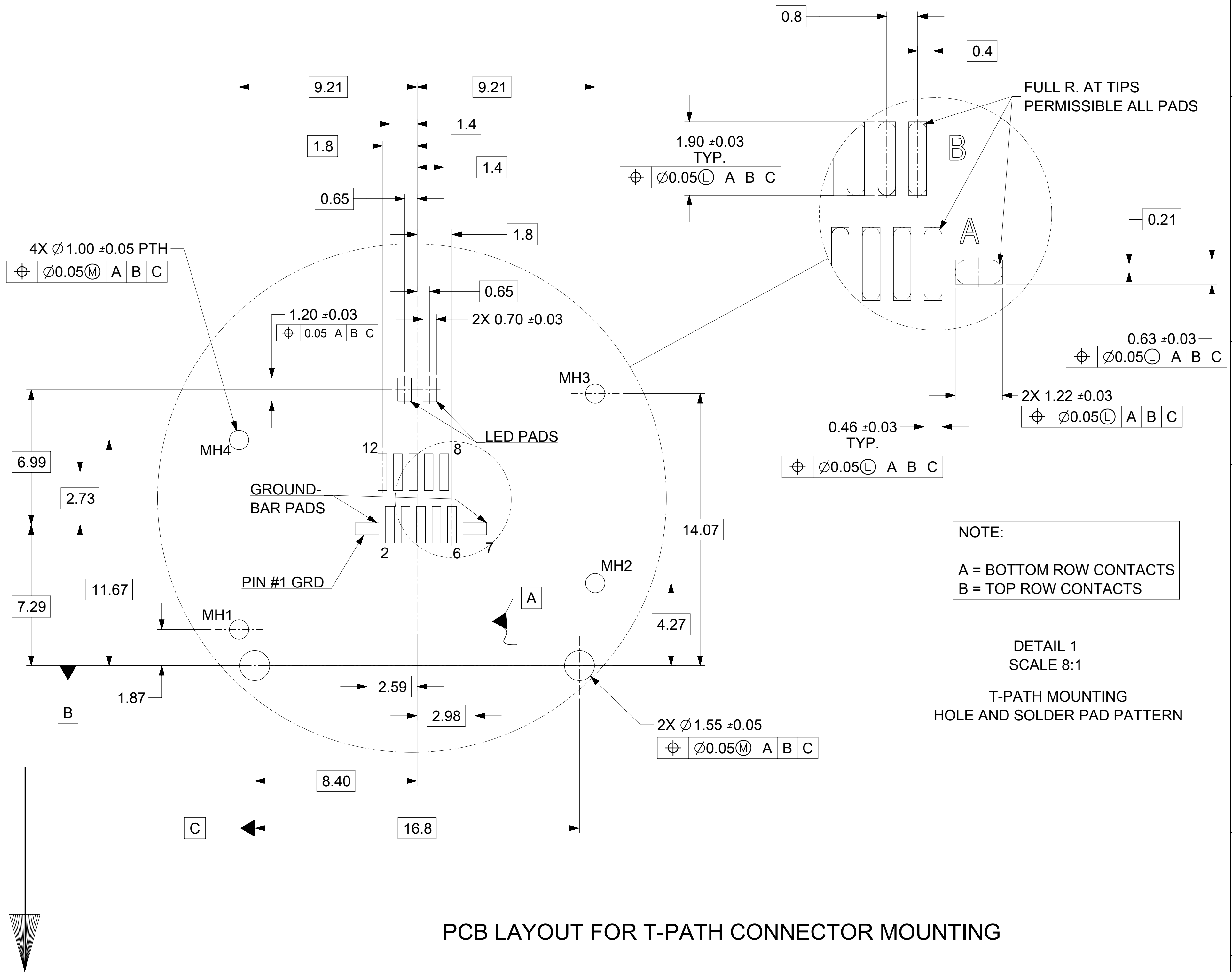
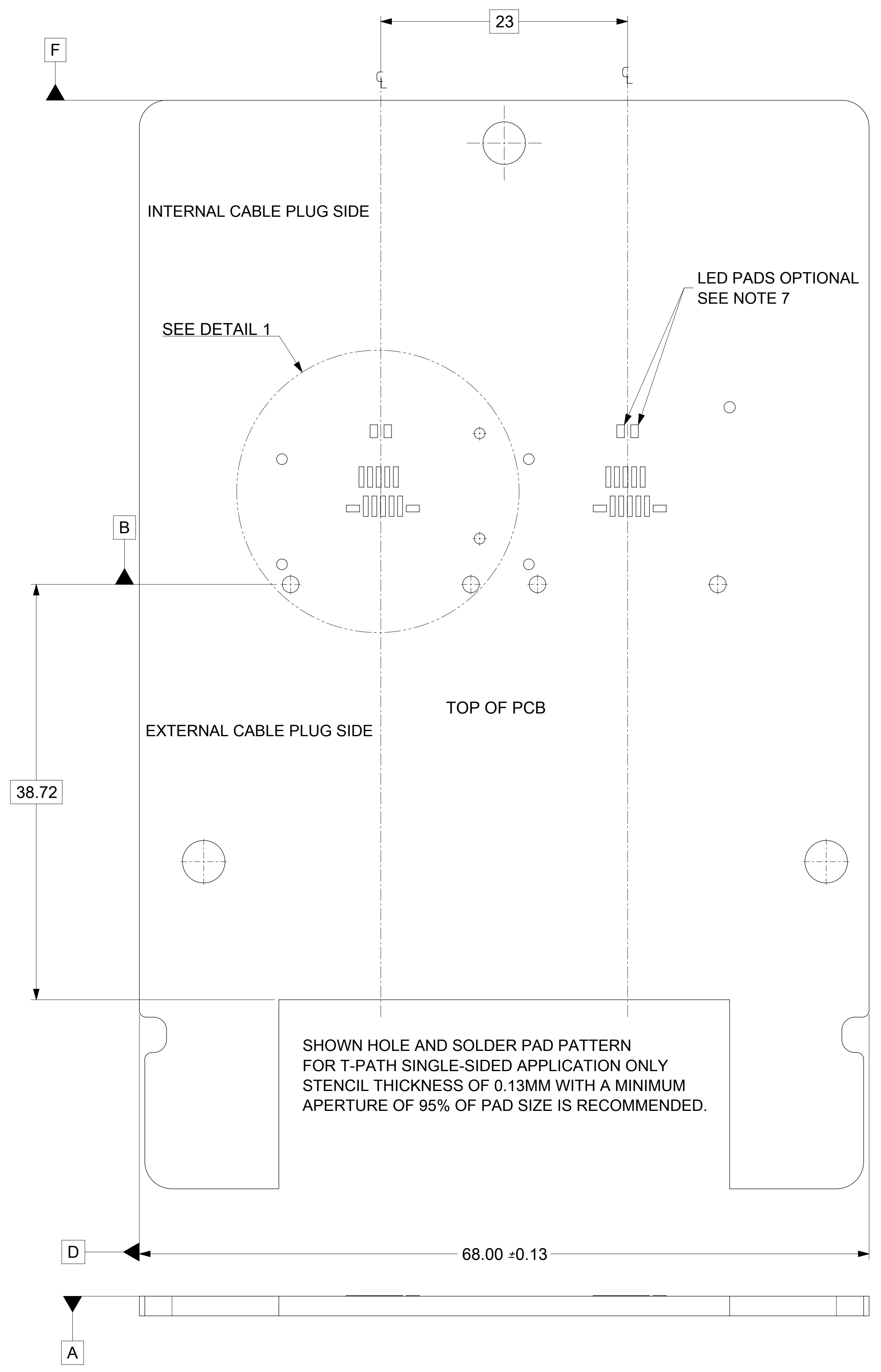
| | | | | | | | |
|---|--|---------------------------------------|---|-----------------------------------|--------------|------------------------|--|
| SEE SHEET 1 IEC NO: UCP2017-2046 DRAWN BY: MWOLFE 2017/05/05 CHECKED BY: CHYKOBARKER 2017/05/12 APPR: SMILLER 2017/05/19 REV DESCRIPTION | QUALITY SYMBOLS | GENERAL TOLERANCES (UNLESS SPECIFIED) | DIMENSION STYLE | SCALE | DESIGN UNITS | THIRD ANGLE PROJECTION | |
| | ▽=0 | mm INCH | MM ONLY | 4:1 | METRIC | ☉ | |
| | ▽=0 | 4 PLACES ± --- ± --- | DRAWN BY DATE | TITLE | | | |
| | ▽=0 | 3 PLACES ± --- ± --- | MWOLFE 2016/07/01 | T-PATH CONNECTOR HARDTOP ASSEMBLY | | | |
| | 2 PLACES ± 0.13 ± --- | CHECKED BY DATE | molex | | | | |
| | 1 PLACE ± 0.25 ± --- | APPROVED BY DATE | SD-172604-0002 | | | | |
| | 0 PLACE ± --- ± --- | SMILLER 2017/05/19 | SD-172604-0002 | | | | |
| | ANGULAR ±1/2° | MATERIAL NO. | DOCUMENT NO. | | | | |
| | DRAFT WHERE APPLICABLE MUST REMAIN WITHIN DIMENSIONS | 472604-0002 | SD-172604-0002 | | | | |
| | | SIZE D | THIS DRAWING CONTAINS INFORMATION THAT IS PROPRIETARY TO MOLEX INCORPORATED AND SHOULD NOT BE USED WITHOUT WRITTEN PERMISSION | | | | |

VACUUM PICK-UP AREA



- NOTES:
- MATERIAL - HOUSING - HALOGEN FREE GLASS FILLED, LCP
UL 94V-0, COLOR: BLACK
SHELLS: 0.15 THICK NICKEL-SILVER ALLOY, UNPLATED
TERMINALS - HIGH PERFORMANCE COPPER ALLOY
 - PLATING - CONTACT AREA - 0.76 µm MIN GOLD OVER 2.54 µm NICKEL
SOLDER AREA - 2.54 -5.09 µm TIN OVER 2.54 µm MIN NICKEL
 - DATE CODE: 4 DIGIT (3 DIGIT DAY, 1 DIGIT YEAR)
 - CONFORMS TO PRODUCT SPECIFICATION: PS-172604-0001
 - CONNECTOR ASSEMBLY IS RoHS AND LOW HALOGEN COMPLIANT
 - DIMENSIONS AND TOLERANCES CONFORM TO AMSE Y14.5 2009
 - LED IS OPTIONAL. RECOMMENDED LED PACKAGE: 1608/0603 0.4mm HIGH MAX.
 - PACKAGING: TAPE AND REEL. PER PK-172604-9001.
 - CONNECTOR TO BE USED IN CONJUNCTION WITH EMI CAGES SHOWN ON DRAWING SD-172604-2100
 - IFF CABLE PLUG TO HAVE 1.0mm THICK PCB.

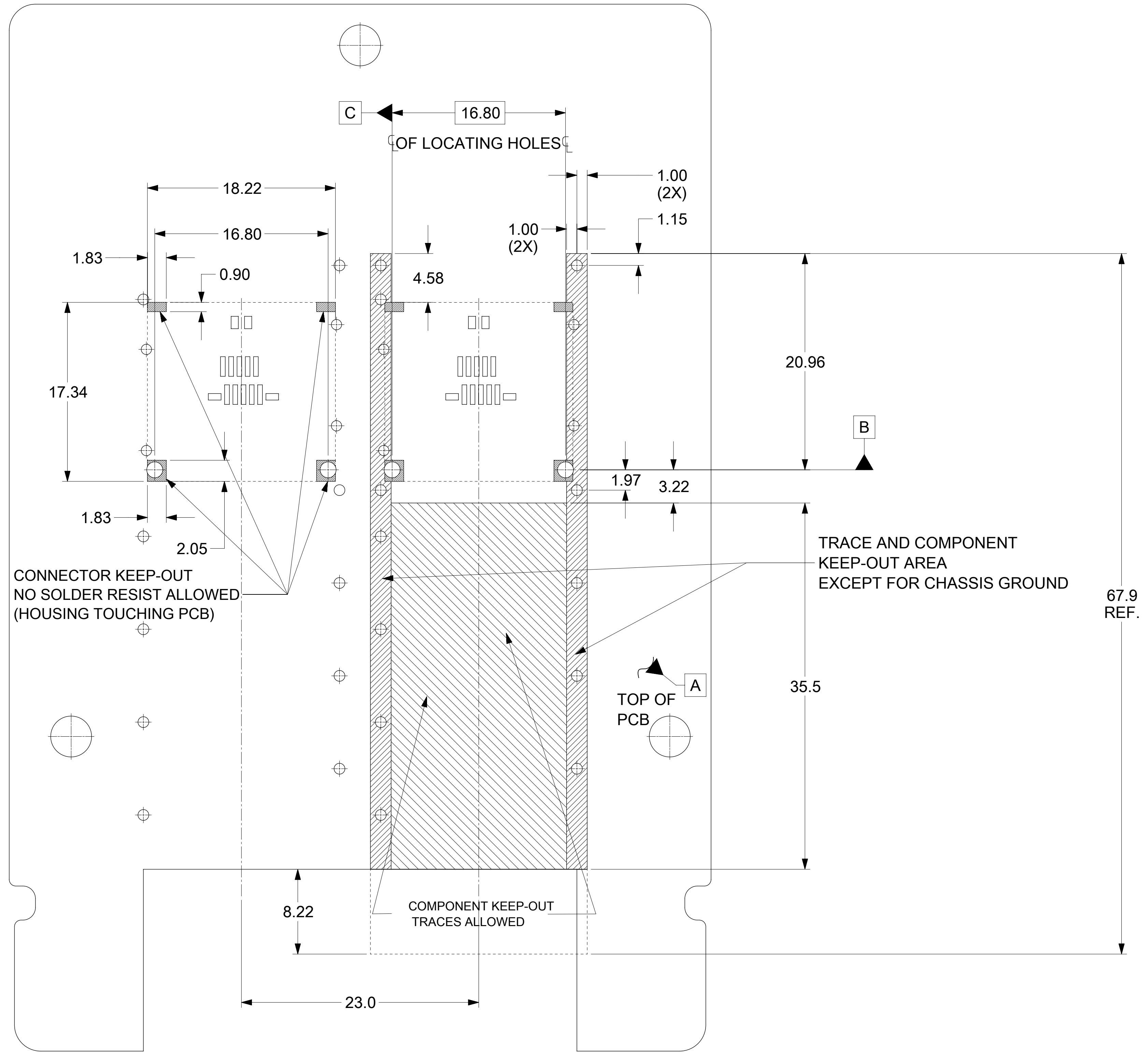
| | | | | | | | | | | | |
|---|--------------------|--|---------------------------------------|---|-----------------|--|-------|--------------------------------------|--|---|--|
| THIS DRAWING CONTAINS INFORMATION THAT IS PROPRIETARY TO MOLEX ELECTRONIC TECHNOLOGIES, LLC AND SHOULD NOT BE USED WITHOUT WRITTEN PERMISSION | | | | | | | | | | | |
| QUALITY SYMBOLS | REV TAIL POSITIONS | | GENERAL TOLERANCES (UNLESS SPECIFIED) | | DIMENSION UNITS | | SCALE | | | | |
| ▽ = 0 ▽ = 3 ▽ = 0 ▽ = 0 ▽ = 0 ▽ = 0 ▽ = 0 ▽ = 0 | 2018/01/09 | 2018/01/15 | mm | | 4:1 | | | | | | |
| DRWN: ABN CHKD: SVANG01 REV APPR: SMILLER | | DATE: 2018/01/24 | | DRWN BY: MWOLFE DATE: 2017/05/12 | | CHKD BY: BBARKER DATE: 2017/05/12 | | APPR BY: SMILLER DATE: 2017/05/19 | | PRODUCT CUSTOMER DRAWING | |
| EC NO: 170877 DRWN: ABN CHKD: SVANG01 REV APPR: SMILLER | | DRAFT WHERE APPLICABLE MUST REMAIN WITHIN DIMENSIONS | | DRAWING SIZE: D THIRD ANGLE PROJECTION | | SERIES: 172604 MATERIAL NUMBER: 172604-0003 | | CUSTOMER: GENERAL | | DOCUMENT NUMBER: SD-172604-0003 DOC TYPE: PSD DOC PART: 001 SHEET NUMBER: 1 OF 3 | |



PCB LAYOUT FOR T-PATH CONNECTOR MOUNTING

FRONT OF CONNECTOR
(PLUG MODULE SIDE)

| | | | | | | |
|---|---|---|--|--|---|--|
| QUALITY SYMBOLS □ = 0 ▽ = 0 ▽ = 0 ▽ = 0 ▽ = 0 ▽ = 0 ▽ = 0 ▽ = 0 ▽ = 0 ▽ = 0 ▽ = 0 | THIS DRAWING CONTAINS INFORMATION THAT IS PROPRIETARY TO MOLEX ELECTRONIC TECHNOLOGIES, LLC AND SHOULD NOT BE USED WITHOUT WRITTEN PERMISSION | | GENERAL TOLERANCES (UNLESS SPECIFIED) DIMENSION UNITS: mm SCALE: 4:1 | | | |
| | REV TAIL POSITIONS EC NO: 170877 DRWN: ABN CHKD: SVANG01 REV APPR: SMILLER | 2018/01/09 2018/01/15 2018/01/24 | ANGULAR TOL ± 0.5 ° 4 PLACES ± 3 PLACES ± 2 PLACES ± 0.13 1 PLACE ± 0.25 0 PLACES ± | | DRWN BY: MWOLFE DATE: 2017/05/12 CHKD BY: BBARKER DATE: 2017/05/12 APPR BY: SMILLER DATE: 2017/05/19 | T-PATH CONNECTOR HARDTOP ASSEMBLY |
| | DRAFT WHERE APPLICABLE MUST REMAIN WITHIN DIMENSIONS | | DRAWING SIZE: D THIRD ANGLE PROJECTION | | PRODUCT CUSTOMER DRAWING | |
| | SERIES: 172604 MATERIAL NUMBER: 172604-0003 CUSTOMER: GENERAL | DOCUMENT NUMBER: SD-172604-0003 DOC TYPE: PSD DOC PART: 001 SHEET NUMBER: 2 OF 3 | | | GENERAL | |



**T-PATH CONNECTOR AND EMI CAGE
KEEP-OUT ZONES**

| | | | | | | | | | | |
|----------------------------|---|--|--|--|---------------------------------|--|------------------------------|--|-----------------------------------|--|
| QUALITY SYMBOLS | THIS DRAWING CONTAINS INFORMATION THAT IS PROPRIETARY TO MOLEX ELECTRONIC TECHNOLOGIES, LLC AND SHOULD NOT BE USED WITHOUT WRITTEN PERMISSION | | | | | | | | | |
| | GENERAL TOLERANCES (UNLESS SPECIFIED) DIMENSION UNITS: mm SCALE: 4:1 | | DRWN BY: MWOLFE DATE: 2017/05/12 | | | | | | | |
| | ANGULAR TOL $\pm 0.5^\circ$ | | CHKD BY: BBARKER DATE: 2017/05/12 | | | | | | | |
| | 4 PLACES \pm | | APPR BY: SMILLER DATE: 2017/05/19 | | SERIES: 172604 | | MATERIAL NUMBER: 172604-0003 | | CUSTOMER: GENERAL | |
| | 3 PLACES \pm | | DRAFTING SIZE: D THIRD ANGLE PROJECTION | | DOCUMENT NUMBER: SD-172604-0003 | | DOC TYPE: PSD | | DOC PART SHEET NUMBER: 001 3 OF 3 | |
| | 2 PLACES ± 0.13 | | EC NO: 170877 DRWN: ABN CHKD: SVANG01 REV APPR: SMILLER | | REV TAIL POSITIONS: A1 | | 172604 | | 172604-0003 | |
| | 1 PLACE ± 0.25 | | DRAFT WHERE APPLICABLE MUST REMAIN WITHIN DIMENSIONS | | 172604 | | 172604-0003 | | 172604-0003 | |
| | 0 PLACES \pm | | 172604 | | 172604 | | 172604-0003 | | 172604-0003 | |
| | 172604 | | 172604 | | 172604 | | 172604-0003 | | 172604-0003 | |