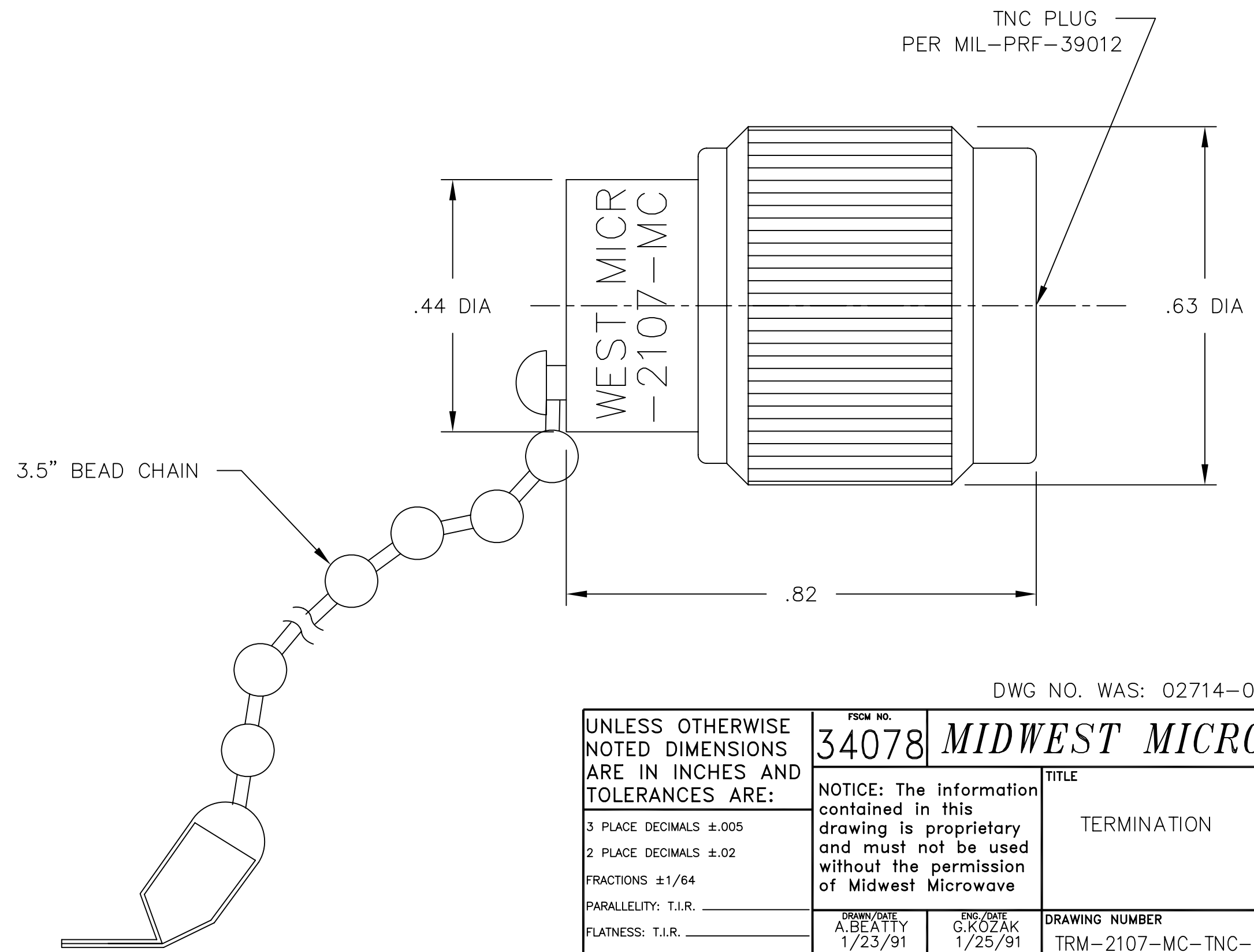


- NOTES:
- 1.0 ELECTRICAL SPECIFICATIONS:
 - 1.1 FREQUENCY RANGE: DC to 12.4GHz
 - 1.2 INPUT POWER:
 - 1.2.1 AT +25°C: 2 WATTS MAX.
 - 1.2.2 AT +125°C: 0.5 WATTS MAX.
 - 1.3 VSWR:
 - 1.3.1 DC to 8.0GHz: 1.20:1 MAX.
 - 1.3.2 8.0 to 12.4GHz: 1.25:1 MAX.
 - 1.4 IMPEDANCE: 50 OHMS
 - 1.5 OPERATING TEMP. RANGE:
 - 55°C to +125°C

- 2.0 MARKING:
- 2.1 MARK UNIT AS SHOWN:
(REF: INK-02729-27-04)



DWG NO. WAS: 02714-01-00

| REV. | DESCRIPTION | DATE |
|------|--------------------------|----------|
| - | RELEASED | 1/26/79 |
| A | ECR 1233 | 6/29/81 |
| B | ECR 6545 | 6/30/89 |
| B1 | CORR. TITLE | 12/13/89 |
| C | ECR 7129 | 2/20/89 |
| D | REDRAW ON CAD ADD SPECS. | 1/23/91 |
| D1 | CORR F.C. FROM 10 TO 02 | 6/10/91 |
| E | ECN 11006 | 9/12/91 |
| F | ECN 12202 | 11/9/92 |
| G | ECN 12918 | 9/9/93 |
| G1 | ADDED TITLEBLOCK | 11/2/05 |

| | | | | | |
|---|--|---|---------------------------------|--------------------------------------|--|
| UNLESS OTHERWISE NOTED DIMENSIONS ARE IN INCHES AND TOLERANCES ARE: | | FSCM NO. 34078 | | MIDWEST MICROWAVE | |
| 3 PLACE DECIMALS ±.005 | | NOTICE: The information contained in this drawing is proprietary and must not be used without the permission of Midwest Microwave | | TITLE TERMINATION | |
| 2 PLACE DECIMALS ±.02 | | | | | |
| FRACTIONS ±1/64 | | | | | |
| PARALLELITY: T.I.R. _____ | | | | | |
| FLATNESS: T.I.R. _____ | | DRAWN/DATE A.BEATTY 1/23/91 | ENG./DATE G.KOZAK 1/25/91 | DRAWING NUMBER TRM-2107-MC-TNC-02 | |
| CONCENTRICITY: T.I.R. _____ | | CHECKED/DATE D.ESTY 1/24/91 | APPROVED/DATE | SCALE: 5=1 | |
| ANGLES AND PERPENDICULARITY: ±1° | | | | SHEET 1 of 1 | |