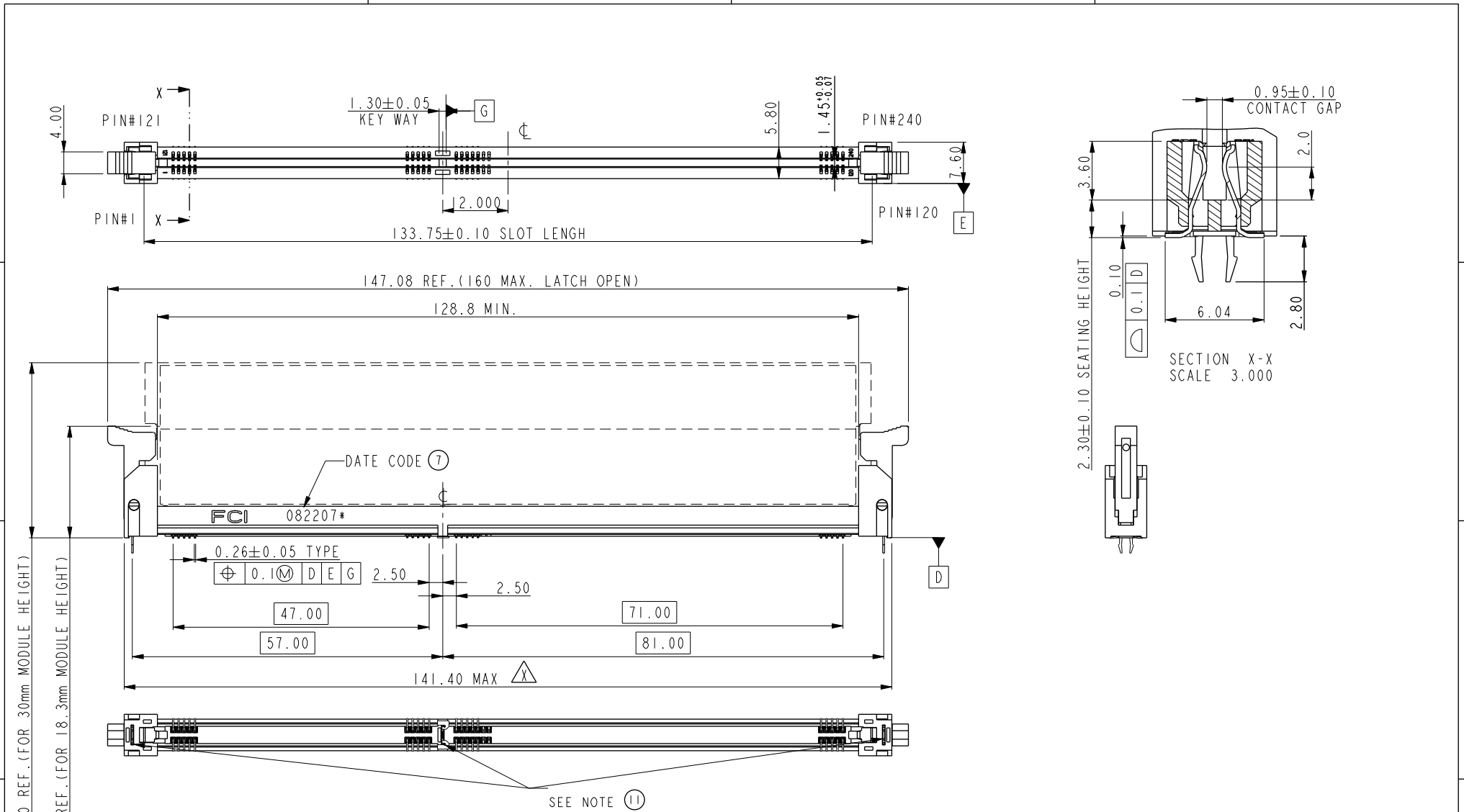




Copyright FCI.

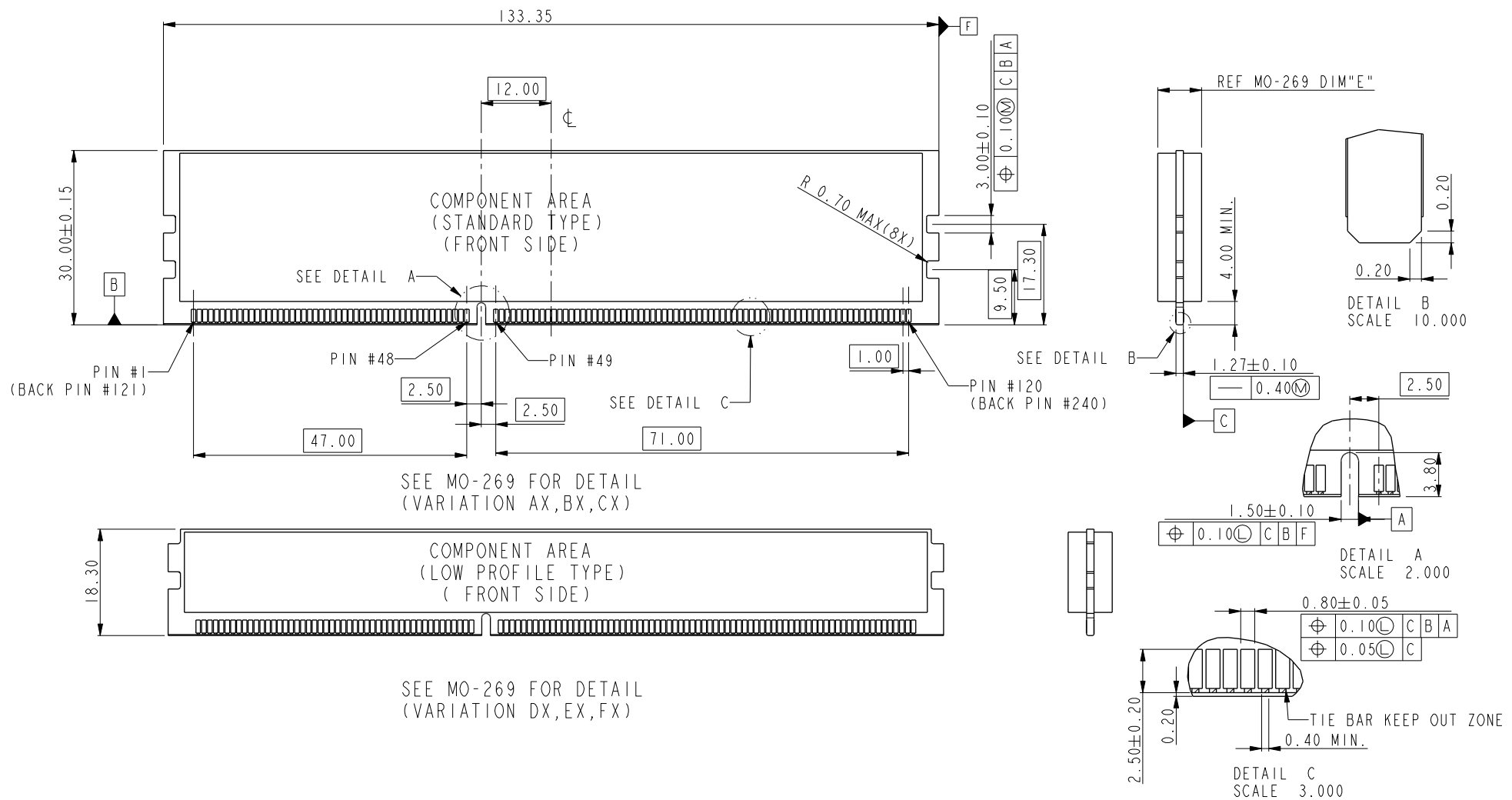


| | | | | | | | | | | | | | |
|---------------------------------------|--|----------------------------|--|------------|--|----------------|--|---------------------------|--|---|--|------------------------|--|
| spec ref * | | dr Rick Bian | | 2010/07/03 | | projection | | size A4 | | scale 0.500 | | | |
| tolerance std ASME Y14.5 | | eng Eric Jiang | | 2015/06/17 | | | | mm | | ecn no ELX-DG-21184-1 | | | |
| TOLERANCES UNLESS OTHERWISE SPECIFIED | | chr Nickor Zuo | | 2015/06/24 | | | | rel level Released | | | | | |
| ASME Y14.5 | | appr Pei-Ming Zheng | | 2015/06/24 | | product family | | 10079248 | | rev X | | | |
| surface ✓ | | linear | | 0.X ±0.30 | | | | www.fci.com | | title SMT DDRIII SOCKET ASS'Y DDRIII,240P SOCKET(FOR RDIMM MODULE) | | | |
| ASME Y14.5 | | 0.XX ±0.15 | | cat. no. * | | | | | | | | Product - Customer Drw | |
| | | 0.XXX ±0.05 | | | | | | | | | | sheet 1 of 5 | |
| ASME Y14.5 | | angular | | 0° ±2° | | | | | | | | | |

PreV File - REV C - 2009-06-09



Copyright FCI.

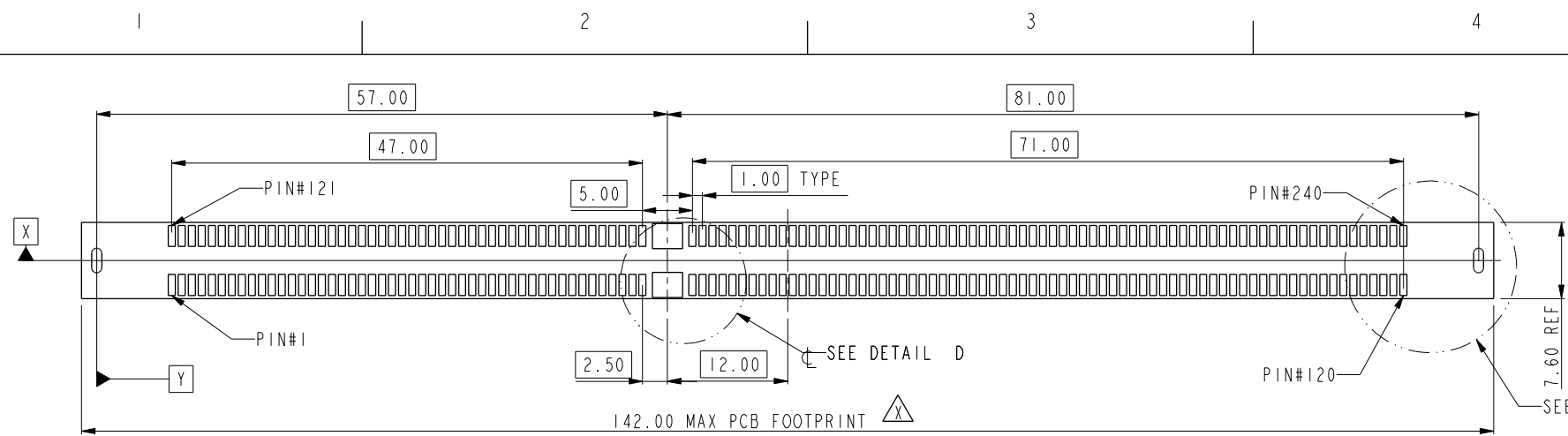


| | | | | | | | | | | | |
|---------------|---------------------------------------|------|----------------|------------|--|--------------------|----------|------------------------|-----------|--------------|--|
| spec ref | * | dr | Rick Bian | 2010/07/03 | projection | mm | size | A4 | scale | 0.500 | |
| tolerance std | TOLERANCES UNLESS OTHERWISE SPECIFIED | eng | Eric Jiang | 2015/06/17 | | | ecn no | ELX-DG-21184-1 | rel level | Released | |
| ASME Y14.5 | | chr | Nickor Zuo | 2015/06/24 | | | | | | | |
| | | appr | Pei-Ming Zheng | 2015/06/24 | | | | | | | |
| surface | linear | 0.X | ±0.30 | | title SMT DDRIII SOCKET ASS'Y DDRIII,240P SOCKET(FOR RDIMM MODULE) | dwg no 10079248 | rev X | Product - Customer Drw | | sheet 2 of 5 | |
| | | 0.XX | ±0.15 | | | | | cat. no. | * | | |
| ASME Y14.5 | angular | 0° | ±2° | | | | | www.fci.com | | | |

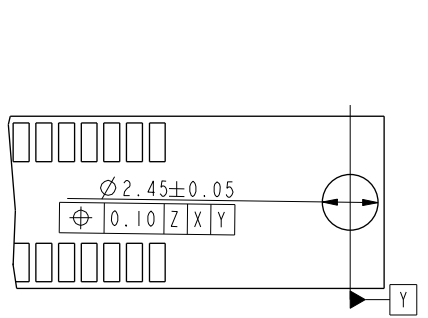
Pre/E File - REV C - 2009-06-09



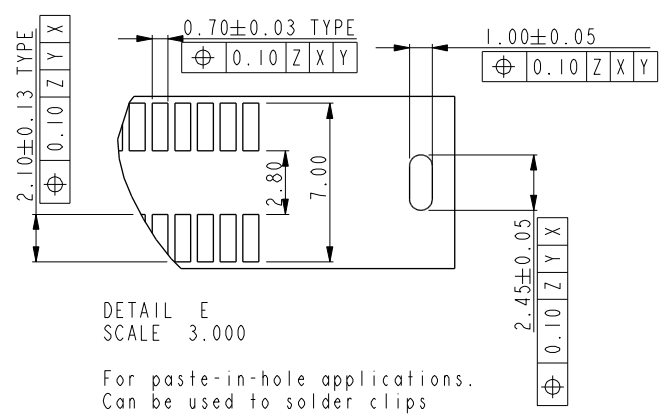
Copyright FCI.



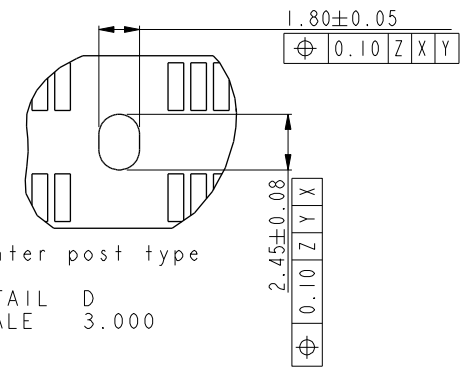
RECOMMEND CIRCUIT BOARD LAYOUT



DETAIL E
SCALE 3.000
Standard hole for hold-down clips



DETAIL E
SCALE 3.000
For paste-in-hole applications.
Can be used to solder clips during reflow operation.



Center post type
DETAIL D
SCALE 3.000

| | | | | | | | | | | | | | | | | | | | | | | | | | | | | | | | | | | | | | |
|---------------|--|------------------------|--------------|------------|------------|----------------|-------|-----------|----------------|-------|---------|----|-----|------|----------------|------------|--|--|---|-------|-------------------------|--------|----------|-----|---|--|--------------------------------------|--|--|--|--|---|--|----------|---|------------------------|--------------|
| spec ref | * | dr | Rick Bian | 2010/07/03 | projection | mm | size | A4 | scale | 0.500 | | | | | | | | | | | | | | | | | | | | | | | | | | | |
| tolerance std | TOLERANCES UNLESS OTHERWISE SPECIFIED | eng | Eric Jiang | 2015/06/17 | | | | ecn no | ELX-DG-21184-1 | | | | | | | | | | | | | | | | | | | | | | | | | | | | |
| ASME Y14.5 | | chr | Nickor Zuo | 2015/06/24 | | product family | | rel level | Released | | | | | | | | | | | | | | | | | | | | | | | | | | | | |
| surface | <table border="1"> <tr> <td>linear</td> <td>0.X</td> <td>±0.30</td> </tr> <tr> <td></td> <td>0.XX</td> <td>±0.15</td> </tr> <tr> <td></td> <td>0.XXX</td> <td>±0.05</td> </tr> <tr> <td>angular</td> <td>0°</td> <td>±2°</td> </tr> </table> | linear | 0.X | ±0.30 | | 0.XX | ±0.15 | | 0.XXX | ±0.05 | angular | 0° | ±2° | appr | Pei-Ming Zheng | 2015/06/24 | | | <table border="1"> <tr> <td>title</td> <td>SMT DDRIII SOCKET ASS'Y</td> <td>dwg no</td> <td>10079248</td> <td>rev</td> <td>X</td> </tr> <tr> <td></td> <td>DDRIII,240P SOCKET(FOR RDIMM MODULE)</td> <td></td> <td></td> <td></td> <td></td> </tr> </table> | title | SMT DDRIII SOCKET ASS'Y | dwg no | 10079248 | rev | X | | DDRIII,240P SOCKET(FOR RDIMM MODULE) | | | | | <table border="1"> <tr> <td>cat. no.</td> <td>*</td> <td>Product - Customer Drw</td> <td>sheet 3 of 5</td> </tr> </table> | | cat. no. | * | Product - Customer Drw | sheet 3 of 5 |
| linear | 0.X | ±0.30 | | | | | | | | | | | | | | | | | | | | | | | | | | | | | | | | | | | |
| | 0.XX | ±0.15 | | | | | | | | | | | | | | | | | | | | | | | | | | | | | | | | | | | |
| | 0.XXX | ±0.05 | | | | | | | | | | | | | | | | | | | | | | | | | | | | | | | | | | | |
| angular | 0° | ±2° | | | | | | | | | | | | | | | | | | | | | | | | | | | | | | | | | | | |
| title | SMT DDRIII SOCKET ASS'Y | dwg no | 10079248 | rev | X | | | | | | | | | | | | | | | | | | | | | | | | | | | | | | | | |
| | DDRIII,240P SOCKET(FOR RDIMM MODULE) | | | | | | | | | | | | | | | | | | | | | | | | | | | | | | | | | | | | |
| cat. no. | * | Product - Customer Drw | sheet 3 of 5 | | | | | | | | | | | | | | | | | | | | | | | | | | | | | | | | | | |

ProjE File - REV C - 2009-06-09



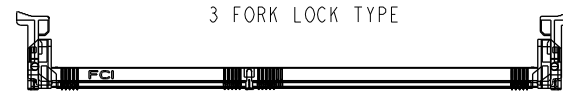
SCALE 0.500

10079248-10***
CENTER SMT HOLDOWN TYPE



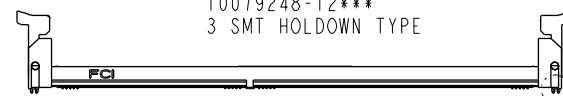
SCALE 0.500

10079248-11***
3 FORK LOCK TYPE



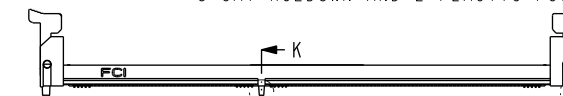
SCALE 0.500

10079248-12***
3 SMT HOLDOWN TYPE



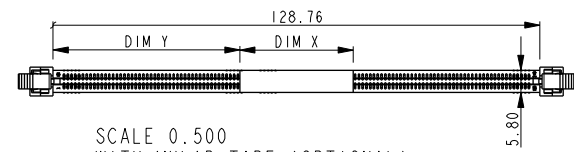
SCALE 0.500

10079248-13***
3 SMT HOLDOWN AND 2 PLASTIC POST TYPE



SCALE 0.500

10079248-15***
3 PLASTIC POST TYPE



SCALE 0.500
WITH MYLAR TAPE (OPTIONAL)

10079248 - □ □ □ □

STYLE : MECHANICAL KEYING

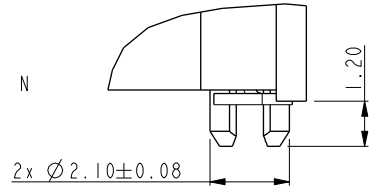
1 : 1.5 VOLT. W/ CENTER KEY

HOLD DOWN TYPE

- 0 : CENTER HOLD DOWN, FORKLOCK AT BOTH END
- 1 : 3 FORKLOCK TYPE
- 2 : 3 SMT HOLDOWN TYPE
- 3 : 3 SMT HOLDOWN AND 2 PLASTIC POST
- 5 : 3 PLASTIC POST TYPE

PACKAGE AND MYLAR OPTION

- ~~0 : SOFT TRAY WITHOUT MYLAR (OBSOLETE)~~
- 1 : HARD TRAY WITH MYLAR 1
- 2 : HARD TRAY WITHOUT MYLAR
- ~~3 : SOFT TRAY WITH MYLAR 1 (OBSOLETE)~~
- 4 : SPECIAL HARD TRAY WITH MYLAR 1
- 5 : SPECIAL HARD TRAY WITHOUT MYLAR
- 6 : HARD TRAY WITH MYLAR 2
- 7 : HARD TRAY WITH MYLAR 3
- 8 : HARD TRAY WITH MYLAR 4
- 9 : SMALLER HARD TRAY WITHOUT MYLAR



DETAIL N
SCALE 5.000

| MYLAR TYPE | DIM X | DIM Y |
|------------|-------|-------|
| MYLAR 1 | 30.0 | 49.38 |
| MYLAR 2 | 90.0 | 19.38 |
| MYLAR 3 | 30.0 | 30.0 |
| MYLAR 4 | 30.0 | 68.8 |

PLATING

| CODE | CONTACT | SOLDERTAIL | UNDERPLATE | NOTE |
|------|----------------------------|--|---|--------------------------|
| 1 | 10u" (0.25um) MIN. GOLD | 100u" (2.54um) MIN. TIN-LEAD | 50u" (1.27um) MIN. NICKEL OVERALL | CONTACT NON-LUBRICANT |
| 2 | 15u" (0.38um) MIN. GOLD | | | |
| 3 | 30u" (0.76um) MIN. GOLD | | | |
| 4 | GOLD FLASH | | | |
| 5 | 10u" (0.25um) MIN. GOLD | | | CONTACT LUBRICATED |
| 6 | 15u" (0.38um) MIN. GOLD | | | |
| 7 | 30u" (0.76um) MIN. GOLD | | | |
| 8 | GOLD FLASH | | | |
| 3S | 5u" (0.125um) MIN. GOLD | CONTACT LUBRICATED WITH HIGH PERFORMANCE POLY A-OLEFIN LUBRICANT | | |
| 1LF | 10u" (0.25um) MIN. GOLD | CONTACT NON-LUBRICANT | | |
| 2LF | 15u" (0.38um) MIN. GOLD | | | |
| 3LF | 30u" (0.76um) MIN. GOLD | | | |
| 4LF | GOLD FLASH | | | |
| 5LF | 10u" (0.25um) MIN. GOLD | | CONTACT LUBRICATED | |
| 6LF | 15u" (0.38um) MIN. GOLD | | | |
| 7LF | 30u" (0.76um) MIN. GOLD | | | |
| 8LF | GOLD FLASH | | | |
| 3SLF | 5u" (0.125um) MIN. GOLD | CONTACT LUBRICATED WITH HIGH PERFORMANCE POLY A-OLEFIN LUBRICANT | | |
| 7SLF | 30u" (0.76um) MIN. GOLD | | | |

COLOR OF HOUSING AND EJECTOR

- 0 : BLACK HOUSING + IVORY EJECTOR
- 1 : BLACK HOUSING + BLACK EJECTOR
- 2 : BLACK HOUSING + BLUE(661C) EJECTOR
- 3 : BLACK HOUSING + YELLOW(123C) EJECTOR

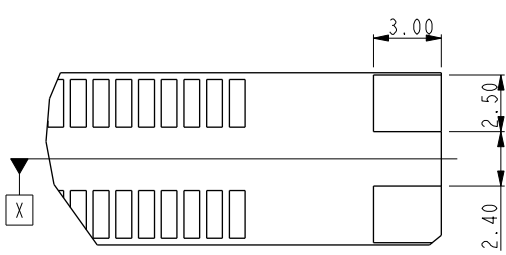


Copyright FCI.

| | | | | | | | | | | | | | | |
|---------------|---------------------------------------|--------|----------------|------------|------------|----------------|-------------------------|--------|------------------------|----------|----------|-----|---|--------------|
| spec ref | * | dr | Rick Bian | 2010/07/03 | projection | mm | size | A4 | scale | 0.500 | | | | |
| tolerance std | TOLERANCES UNLESS OTHERWISE SPECIFIED | eng | Eric Jiang | 2015/06/17 | | | ← → | ecn no | ELX-DG-21184-1 | | | | | |
| ASME Y14.5 | | chr | Nickor Zuo | 2015/06/24 | | | | | rel level | Released | | | | |
| ASME Y14.5 | | appr | Pei-Ming Zheng | 2015/06/24 | | product family | | | | | | | | |
| surface | ✓ | linear | 0.X | ±0.30 | | title | SMT DDRIII SOCKET ASS'Y | | | dwg no | 10079248 | rev | X | |
| ASME Y14.5 | | | 0.XX | ±0.15 | | | cat. no. | * | Product - Customer Drw | | | | | sheet 4 of 5 |
| | | | 0.XXX | ±0.05 | | | | | | | | | | |
| ASME Y14.5 | angular | 0° | ±2° | | | | | | | | | | | |

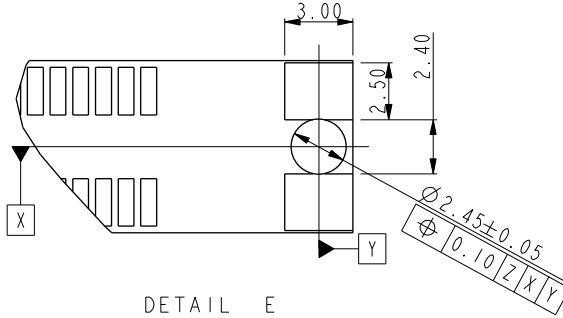


Copyright FCI.



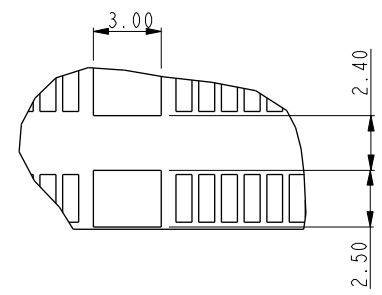
DETAIL E
SCALE 3.000

For smt holddown type



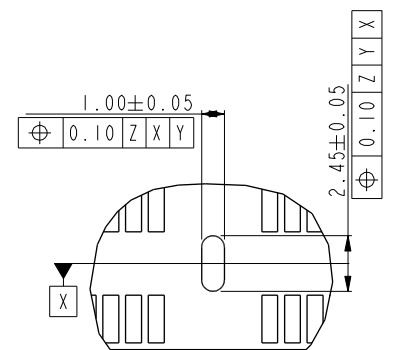
DETAIL E
SCALE 3.000

For 3smt holddown + 2plastic post type



Center smt holddown type

DETAIL D
SCALE 3.000

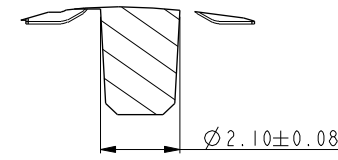


Center forklock type

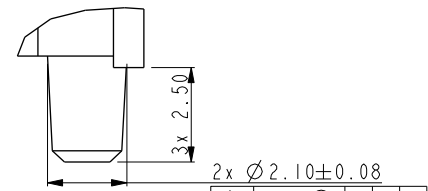
DETAIL D
SCALE 3.000

NOTES:

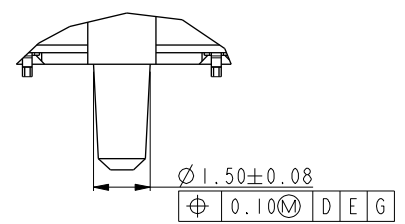
- MATERIAL:
HOUSING: HIGH PERFORMANCE RESINS, GLASS FILLED UL94V-0 RATED.
EJECTOR: HIGH PERFORMANCE RESINS, GLASS FILLED UL94V-0 RATED.
TERMINAL: HIGH PERFORMANCE COPPER ALLOY
METAL CLIP: COPPER ALLOY.
- FCI LOGO TO BE APPROXIMATELY LOCATED AS SHOWN ON PRINT.
- PRODUCT SPECIFICATION: GS-12-486.
- PACKAGING SPECIFICATION: GS-14-899.
- RECOMMENDED STENCIL THICKNESS NO LESS THAN 0.15 mm.
- FOR OPTIMUM PERFORMANCE. THE TIE BAR IS TO BE ON AN INTERNAL LAYER SO THAT THE REMNANT CANNOT CAUSE CONTACT DAMAGE.
- THE DATE CODE IS SHOWN "MMDDYY*": "*" MEANS PRODUCTION LINE.
- THIS PRODUCT MEETS EUROPEAN UNION DIRECTIVES AND OTHER COUNTRY REGULATIONS AS DESCRIBED IN GS-22-008.
- THE HOUSING WILL WITH STAND EXPOSURE TO 260°C PEAK TEMPERATURE FOR 10 SECONDS IN AN IR REFLOW SOLDERING APPLICATION.
- PRODUCT APPLICATION SPEC GS-20-089.
- THE HOLDLOCK TYPES ARE OPTION FOR HOLDOWN OR FORKLOCK.
- A Δ SYMBOL WILL BE NEXT TO ANY DIMENSION, VIEW, OR NOTE WHICH HAS BEEN MODIFIED WITH THE CURRENT DRAWING REVISION.



SECTION K-K
SCALE 5.000



DETAIL M
SCALE 5.000



DETAIL J
SCALE 5.000

| | | | | | | | | | | | | | |
|---------------|--|---------------------------------------|------------|---|----------------|---------------------------|----------------|--------------------------|----------------|------------------------|-------|--------------|--|
| spec ref | | * | | dr | Rick Bian | 2010/07/03 | projection | mm ←→ | size | A4 | scale | 0.500 | |
| tolerance std | | TOLERANCES UNLESS OTHERWISE SPECIFIED | | eng | Eric Jiang | 2015/06/17 | | | ecn no | ELX-DG-21184-1 | | | |
| ASME Y14.5 | | | | chr | Nickor Zuo | 2015/06/24 | | | | rel level | | Released | |
| surface | | ✓ | | appr | Pei-Ming Zheng | 2015/06/24 | | | product family | | | | |
| ASME Y14.5 | | linear | 0.X ±0.30 | title SMT DDRIII SOCKET ASS'Y DDRIII,240P SOCKET(FOR RDIMM MODULE) | | www.fci.com cat. no. * | | dwg no 10079248 rev X | | | | | |
| | | | 0.XX ±0.15 | | | | | | | Product - Customer Drw | | sheet 5 of 5 | |
| | | angular | 0° ±2° | | | | | | | | | | |

Pro/E File - REV C - 2009-06-09