

Current Mark Displays

CRM1000 Series



CRM2000 Series



CRM3000 Series



The **Current Mark Displays** are designed as a low cost method for providing a visual indication and measurement of electrical current flow. The current-carrying wire is routed through the window opening in the current sensing transformer, providing sensing and power for the instrument.

CRM1000 Series high efficiency, 7 LED indicator that illuminates as the current approaches the full scale range.

CRM2000 Series is a modern looking light bar with nice visual appeal. **CRM3000** Series is an auto-ranging display with an input range up to 50 AAC.

Applications

- Monitor Status of Heater Elements
- Observe Remote Loads
- Indicate Phase Loss
- Monitor Motor Operation

Features

- Self Powered
- Quick Visual Marking of AC Current
- Compact
- Low Cost for high Volume OEM Applications

Specifications

- 300AAC In-Rush 100AAC Continuous 50 AAC Rated
- 600 VAC Max rating
- Thermoplastic Case Material
- 50/60 Hz Bandwidth*
- 30°C to +60°C Operating Temperature
- 55°C to +85°C Storage Temperature

* Contact Factory for additional input frequency ranges

Regulatory Agencies



PART NUMBERS

CRM1000	-			7-LED Indicator
CRM2000	-			Light Bar
CRM3000	-	50		Auto Ranging to 50 AAC

Add suffix for input range

- 25 - 2-25 AAC
- 50 - 2-50 AAC



Current Transformer:

- I Internal
- R Remote Split CR3110-1500-36 (Included in Price)



CR3110-1500-36



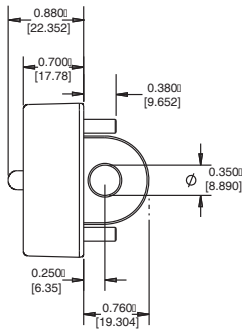
3500 Scarlet Oak Blvd. St. Louis MO USA 63122 V: 636-343-8518 F: 636-343-5119

Web: <http://www.crmagnetics.com>

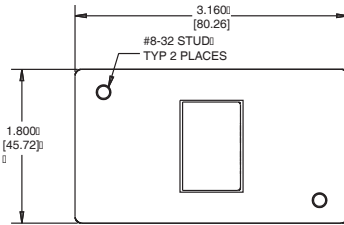
80

E-mail: sales@crmagnetics.com

OUTLINE DRAWING

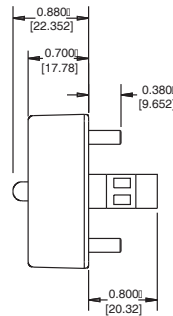


SIDE VIEW

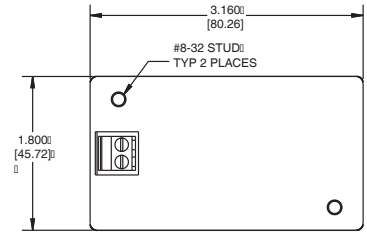


BACK VIEW

CRM1000 - I UNIT DIMENSIONS

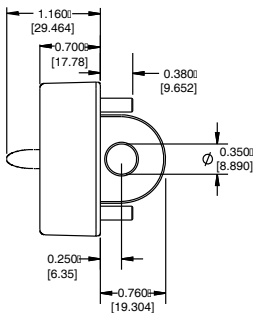


SIDE VIEW

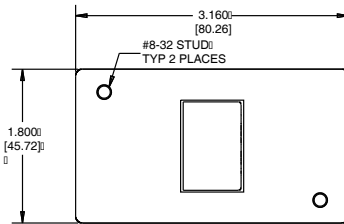


BACK VIEW

CRM1000 - R UNIT DIMENSIONS

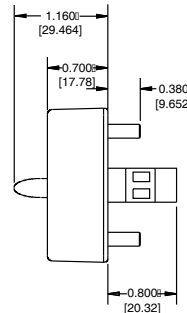


SIDE VIEW

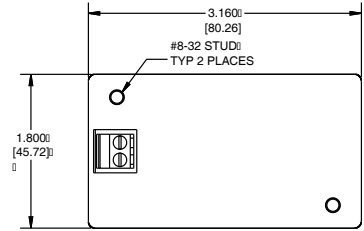


BACK VIEW

CRM2000 - I UNIT DIMENSIONS

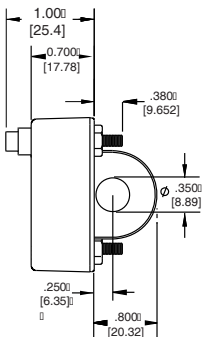


SIDE VIEW

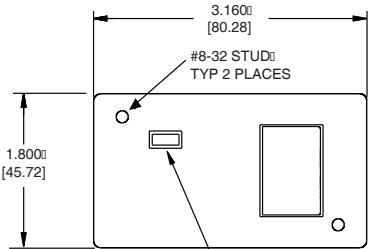


BACK VIEW

CRM2000 - R UNIT DIMENSIONS

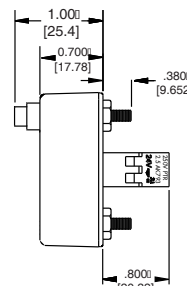


SIDE VIEW

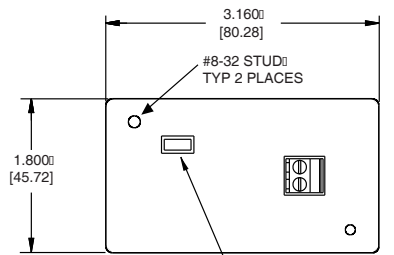


BACK VIEW

CRM3000-50-I UNIT DIMENSIONS



SIDE VIEW



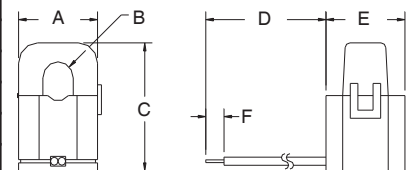
BACK VIEW

CRM3000-50-R UNIT DIMENSIONS

CRM3000 SPECIFICATIONS

	CALIBRATION	LOW SCALE	HIGH SCALE	ACCURACY
CRM3000-50-I BASIC ACCURACY	10 AAC	9.9	10.1	1.0 %
	25 AAC	24.25	25.25	1.0 %
	50 AAC	49.50	50.50	1.0 %
CRM3000-50-R BASIC ACCURACY	10 AAC	9.8	10.2	2.0 %
	25 AAC	24.50	25.50	2.0 %
	50 AAC	49.00	51.00	2.0 %
READABLE RANGE FROM 2 AAC TO 51 AAC				

CR3110-1500-36 For Remote Application



PART NUMBER	A	B	C	D	E	F
CR3110-1500-36	1.04	0.40	1.58	36.0	1.04	0.24

CRM3000 CABLE ASSEMBLY CONNECTION DIAGRAM



ALARM PROGRAMMING AND OPERATING INSTRUCTIONS

Models:

CRM3000-50-I
CRM3000-50-R

1. Provide power to the unit.
2. Determine desired current level to activate alarm
3. Press and hold alarm button for two seconds and release
4. LCD display blinks either the last alarm setting or "Aoff".
(Unit is factory set in "Aoff" mode)
5. Depress and release alarm button until desired set-point is reached
6. Press and hold alarm button for two seconds
7. Set-point is stored in memory and unit returns to normal operation
8. To deactivate alarm, press and hold alarm button for two seconds in "Aoff" mode

CRM3000 ALARM CABLE & PIN CONNECTOR (Optional)

CRM3000-CBL-36

CRM3000 Alarm Cable Assembly 36" Lead